

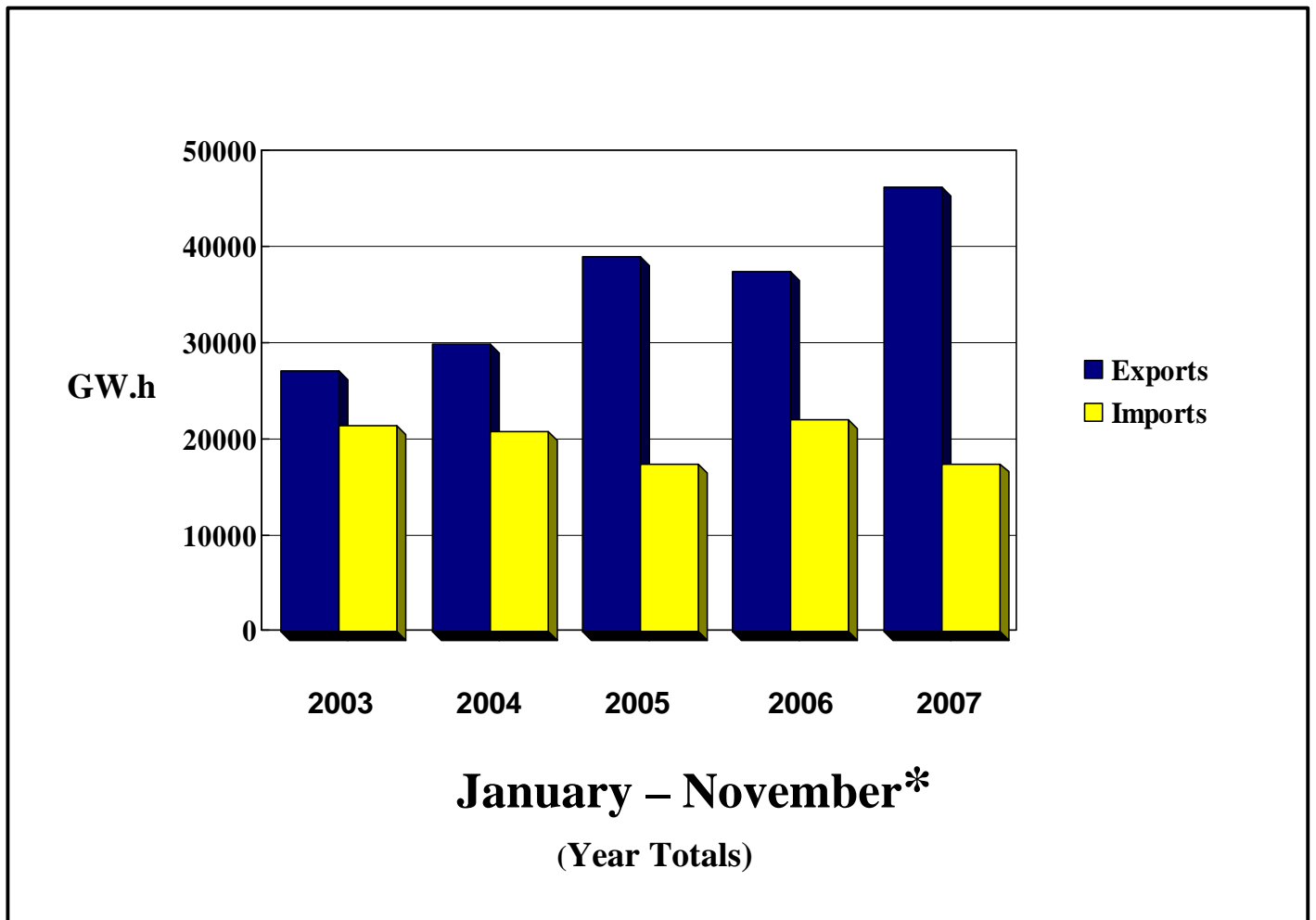


# Electricity Exports and Imports

## Monthly Statistics for

### November 2007 [Revision 8 February 2008]\*

Exports: 4117 GW.h  
Imports: 1769 GW.h





National Energy Board  
Office national de l'énergie

# TABLE 1

## Exports and Imports of Electricity

### Summary: Canada

#### NOVEMBER 2007

Page 1  
08/02/08

	Exchange Type	Energy (MW.h)		Revenue (CAN\$) <sup>1</sup>		CAN\$/MW.h <sup>2</sup>	
		NOV07	JAN07 - NOV07	NOV07	JAN07 - NOV07	NOV07	L12M
<b>Exports of Electric Energy</b>	Firm	924 768	14 478 463	53 925 894	874 511 773	51.36	54.57
	Interruptible	3 192 421	31 796 667	177 117 843	1 997 602 269	54.36	61.22
	Non-Revenue/Inadvertant	- 626 327	-5 508 029	0	0	0.00	0.00
	Service	34 971	473 189	1 517 538	24 600 266	43.39	50.32
<b>Total Exports</b>		<b>3 525 833</b>	<b>41 240 290</b>	<b>232 561 275</b>	<b>2 896 714 308</b>	<b>63.12</b>	<b>67.01</b>
Total Sales - Firm and Interruptible		4 117 188	46 275 130	231 043 737	2 872 114 042	53.69	59.17
<b>Imports of Electric Energy</b>	Non-Revenue/Inadvertant	- 302 830	-4 927 202	0	0	0.00	0.00
	Purchase	1 768 651	17 533 479	88 589 430	920 976 809	50.09	52.61
	Service	5 239	111 468	0	1 525 832	0.00	12.28
<b>Total Imports</b>		<b>1 471 060</b>	<b>12 717 745</b>	<b>88 589 430</b>	<b>922 502 641</b>	<b>60.22</b>	<b>73.41</b>
<b>Excess of Exports Over Imports</b>		<b>2 054 773</b>	<b>28 522 545</b>	<b>143 971 845</b>	<b>1 974 211 667</b>		
<b>Number of Export Licences:</b>		<b>7</b>					
<b>Number of Export Permits/Orders:</b>		<b>186</b>					
		<b>193</b>					

*For further information, contact:*

**Mary-Jane Sam**  
**Statistical Research Officer,**  
**Commodities Business Unit**  
**National Energy Board**  
**(403) 299-3706**

Footnotes:

1. Includes capacity and energy charges.
2. Average value for the month and the last 12 months (excludes capacity charge).

F - Firm Sales  
I - Interruptible Sales  
P - Purchase (Import)  
N - Non-Revenue (Non-Revenue or Inadvertent)  
S - Service (Spinning Reserve, Storage, Unit Rental, Transmission, etc.)



## TABLE 2A

### Export Summary Report by Source, Authorization and Exchange Type

Source	Authorization	Exchange Type	Energy (MW.h)		Revenue (CAN\$) <sup>1</sup>		CAN\$/MW.h <sup>2</sup>		
			NOV07	JAN07 - NOV07	NOV07	JAN07 - NOV07	NOV07	L12M	
<b>Alberta</b>									
ATCO & Alberta	Permit 287	I	217	2 526	7 522	97 341	34.66	40.61	
Cargill Trading	Permit 204	F	0	2	0	25	0.00	12.27	
CITIGROUP	Permit 308	I	425	450	19 075	20 339	44.88	45.20	
Enmax Marketing	Permit 278	I	1 256	7 220	72 938	315 391	58.07	43.84	
EPCOR Merchant	Permit 186	I	15 919	66 814	845 528	3 185 267	53.11	47.87	
Merrill-Lynch	Permit 227	F	0	377	0	22 404	0.00	59.43	
Morgan Stanley	Permit 180	I	0	50	0	1 209	0.00	24.18	
Northpoint	Permit 282	I	25 203	44 891	1 503 909	2 853 360	59.67	63.56	
Powerex Corp.	Permit 116	I	0	6 452	0	491 559	0.00	76.19	
TransAlta Ener	Permit 168	F	9 932	39 247	555 723	1 954 277	55.95	50.86	
TransCan ULC	Permit 271	I	5 299	19 853	273 685	957 869	51.65	48.25	
TransCanada Ene		I	0	30 593	0	1 473 827	0.00	49.45	
<b>Subtotal Firm and Interruptible Exports: Alberta</b>			<b>58 251</b>	<b>218 475</b>	<b>3 278 379</b>	<b>11 372 867</b>	<b>56.28</b>	<b>52.31</b>	

Footnotes:

1. Includes capacity and energy charges.
2. Average value for the month and the last 12 months (excludes capacity charge).

- F - Firm Sales
- I - Interruptible Sales
- P - Purchase (Import)
- N - Non-Revenue (Non-Revenue or Inadvertent)
- S - Service (Spinning Reserve, Storage, Unit Rental, Transmission, etc.)



## TABLE 2A

### Export Summary Report

#### by Source, Authorization and Exchange Type

Source	Authorization	Exchange Type	Energy (MW.h)		Revenue (CAN\$) <sup>1</sup>		CAN\$/MW.h <sup>2</sup>	
			NOV07	JAN07 - NOV07	NOV07	JAN07 - NOV07	NOV07	L12M
<b>British Columbia</b>								
BC Hydro	Permit 127	N	- 500 232	-5 684 034	0	0	0.00	0.00
		S	5 239	84 724	0	0	0.00	0.00
	Permit 192	N	42 241	242 655	0	0	0.00	0.00
	Permit 298	F	93	1 168	6 666	83 795	71.58	71.74
	Treaty	N	18 847	197 305	0	0	0.00	0.00
Northpoint	Permit 282	I	84	1 174	4 624	62 258	55.04	53.03
Powerex Corp.	Permit 118	I	598 755	8 297 397	36 050 221	512 826 152	60.21	62.29
	Permit 119	F	35 768	281 380	2 464 150	20 995 151	68.89	74.61
Teck Cominco	Permit 244	F	76 927	688 844	4 508 078	38 416 921	58.60	56.05
<b>Subtotal Firm and Interruptible Exports: British Columbia</b>			<b>711 627</b>	<b>9 269 963</b>	<b>43 033 738</b>	<b>572 384 277</b>	<b>60.47</b>	<b>62.18</b>
<b>Manitoba</b>								
Detroit Edison	Permit 205	F	24	36	1 366	1 438	56.91	39.95
Manitoba Hydro	Permit 33	F	0	156 983	0	5 636 562	0.00	35.91
	Permit 34	F	0	152 137	0	5 473 361	0.00	35.98
	Permit 35	F	0	494 037	0	23 684 890	0.00	47.94
	Permit 144	F	17 206	188 848	1 291 363	15 529 402	75.05	83.04

Footnotes:

1. Includes capacity and energy charges.
2. Average value for the month and the last 12 months (excludes capacity charge).

- F - Firm Sales
- I - Interruptible Sales
- P - Purchase (Import)
- N - Non-Revenue (Non-Revenue or Inadvertent)
- S - Service (Spinning Reserve, Storage, Unit Rental, Transmission, etc.)



## TABLE 2A

### Export Summary Report by Source, Authorization and Exchange Type

Source	Authorization	Exchange Type	Energy (MW.h)		Revenue (CAN\$) <sup>1</sup>		CAN\$/MW.h <sup>2</sup>	
			NOV07	JAN07 - NOV07	NOV07	JAN07 - NOV07	NOV07	L12M
Manitoba Hydro	Permit 155	F	21 120	228 880	1 066 669	12 320 515	50.51	54.16
	Permit 207	F	0	173 292	0	12 177 399	0.00	70.67
	Permit 224	F	171 424	1 862 928	8 866 701	102 620 705	51.72	55.65
	Permit 259	F	545	6 386	32 791	377 524	60.18	58.90
	Permit 268	F	0	68 547	0	4 866 152	0.00	71.23
	Permit 269	I	826 721	7 103 270	33 522 134	323 501 827	40.55	45.86
		N	12 643	29 692	0	0	0.00	0.00
	Permit 273	F	0	8	0	872	0.00	108.01
Powerex Corp.	Permit 116	I	0	5	0	96	0.00	19.13
<b>Subtotal Firm and Interruptible Exports: Manitoba</b>			<b>1 037 040</b>	<b>10 435 358</b>	<b>44 781 024</b>	<b>506 190 742</b>	<b>43.18</b>	<b>49.03</b>
<b>New Brunswick</b>								
Brookfield EMI	Permit 303	F	0	98	0	5 557	0.00	56.70
Constell ECG	Permit 138	I	34 958	127 843	1 936 040	7 363 121	55.38	57.60
Emera Energy	Permit 216	S	10 219	290 116	632 571	20 224 756	61.90	69.55
	Permit 217	F	26 878	801 634	1 465 901	49 464 221	54.54	61.27
Fraser Inc.	Permit 225	F	23 085	269 400	2 066 455	23 827 173	89.52	86.47
NB Power	Permit 294	F	0	655	0	47 367	0.00	72.32
	Permit 295	I	85 596	285 513	5 574 983	20 663 041	58.70	62.56

Footnotes:

1. Includes capacity and energy charges.
2. Average value for the month and the last 12 months (excludes capacity charge).

- F - Firm Sales
- I - Interruptible Sales
- P - Purchase (Import)
- N - Non-Revenue (Non-Revenue or Inadvertent)
- S - Service (Spinning Reserve, Storage, Unit Rental, Transmission, etc.)



## TABLE 2A

### Export Summary Report by Source, Authorization and Exchange Type

Source	Authorization	Exchange Type	Energy (MW.h)		Revenue (CAN\$) <sup>1</sup>		CAN\$/MW.h <sup>2</sup>	
			NOV07	JAN07 - NOV07	NOV07	JAN07 - NOV07	NOV07	L12M
Powerex Corp.	Permit 116	I	0	4 202	0	175 690	0.00	41.81
WPS Power Dev.	Licence 177	F	2 304	44 029	124 991	1 959 649	54.26	43.81
<b>Subtotal Firm and Interruptible Exports: New Brunswick</b>			<b>172 821</b>	<b>1 533 374</b>	<b>11 168 370</b>	<b>103 505 819</b>	<b>61.44</b>	<b>65.37</b>
<b>Nova Scotia</b>								
NS Power Inc.	Permit 122	I	1 889	30 299	85 323	1 607 452	45.17	51.55
<b>Subtotal Firm and Interruptible Exports: Nova Scotia</b>			<b>1 889</b>	<b>30 299</b>	<b>85 323</b>	<b>1 607 452</b>	<b>45.17</b>	<b>51.55</b>
<b>Ontario</b>								
2001 RBCP	Permit 315	F	17 508	18 363	899 386	971 372	51.37	52.90
Abitibi	Permit 75	I	0	147	0	4 263	0.00	29.00
Allete, Inc.	Permit 261	F	4 368	17 202	270 606	974 289	61.95	57.98
Brookfield EMI	Permit 112	F	0	278 777	0	15 132 340	0.00	53.09
	Permit 303	F	76 821	382 242	3 564 898	19 815 696	46.41	51.84
Bruce Power	Permit 299	F	102	102	5 739	5 739	56.26	56.26
Cargill Trading	Permit 204	F	2 769	220 820	143 466	11 234 949	51.81	50.84

Footnotes:

1. Includes capacity and energy charges.
2. Average value for the month and the last 12 months (excludes capacity charge).

- F - Firm Sales
- I - Interruptible Sales
- P - Purchase (Import)
- N - Non-Revenue (Non-Revenue or Inadvertent)
- S - Service (Spinning Reserve, Storage, Unit Rental, Transmission, etc.)



## TABLE 2A

### Export Summary Report by Source, Authorization and Exchange Type

Source	Authorization	Exchange Type	Energy (MW.h)		Revenue (CAN\$) <sup>1</sup>		CAN\$/MW.h <sup>2</sup>	
			NOV07	JAN07 - NOV07	NOV07	JAN07 - NOV07	NOV07	L12M
Cdn. Transit	Permit 29	F	0	23	0	0	0.00	0.00
Cincinnati G&E	Permit 257	F	0	361 048	0	22 275 244	0.00	59.73
CITIGROUP	Permit 308	I	6 932	6 932	398 127	398 127	57.43	57.43
Conectiv Energy	Permit 212	I	5 398	155 305	279 496	8 030 700	51.78	51.71
Constell ECG	Permit 138	I	90 423	635 123	4 337 568	29 075 272	47.97	45.68
Constell NE	Permit 264	F	1 104	38 336	89 538	2 261 689	81.10	58.97
Coral Energy	Permit 174	F	0	56 394	0	3 633 218	0.00	63.90
D&W Subway	Permit 26	F	0	4 253	0	0	0.00	0.00
Direct EM Inc.	Permit 200	F	800	212 839	31 372	11 421 541	39.22	52.87
DTE Energy Trad	Permit 206	F	8 906	271 128	402 500	14 377 920	45.19	53.15
EPCOR Merchant	Permit 187	F	57 739	497 072	3 026 225	28 053 544	52.41	55.53
FB Energy	Permit 309	F	1 822	58 275	96 246	4 174 833	52.82	71.64
First Com Ltd	Permit 283	I	0	36 082	0	2 265 530	0.00	61.34
Hydro One Net	Permit 25	F	0	179	0	1 108	0.00	6.20

Footnotes:

1. Includes capacity and energy charges.
2. Average value for the month and the last 12 months (excludes capacity charge).

- F - Firm Sales
- I - Interruptible Sales
- P - Purchase (Import)
- N - Non-Revenue (Non-Revenue or Inadvertent)
- S - Service (Spinning Reserve, Storage, Unit Rental, Transmission, etc.)



## TABLE 2A

### Export Summary Report by Source, Authorization and Exchange Type

Source	Authorization	Exchange Type	Energy (MW.h)		Revenue (CAN\$) <sup>1</sup>		CAN\$/MW.h <sup>2</sup>	
			NOV07	JAN07 - NOV07	NOV07	JAN07 - NOV07	NOV07	L12M
IESO	Permit 289	F	0	420	0	72 772	0.00	173.27
Ind Elc Mark Op	Permit 22	N	- 199 826	- 293 647	0	0	0.00	0.00
Integryst	Permit 250	I	45 544	58 494	2 104 564	2 600 146	46.21	44.45
Lehman Brothers	Permit 296	I	0	100	0	6 600	0.00	66.00
Lighthouse Ener	Permit 272	F	0	997	0	34 056	0.00	34.12
MAG Energy Sol.	Permit 255	I	37 899	431 201	1 753 277	22 027 302	46.26	50.12
Merrill-Lynch	Permit 227	F	3 716	27 051	180 034	1 323 114	48.45	46.49
Morgan Stanley	Permit 180	I	0	42 549	0	2 551 401	0.00	59.93
Northern States	Permit 235	F	0	204 262	0	8 954 315	0.00	44.27
Northpoint	Permit 282	I	52 258	699 242	2 676 589	37 998 205	51.22	54.34
NRG Power Mktg	Permit 171	I	1 767	4 187	57 679	209 928	32.64	50.14
Ont Power Gen	Permit 24	F	16	174	761	2 355	46.81	12.38
OPGI/OHIM	Permit 284	I	160 529	1 830 374	7 622 883	95 791 259	46.29	48.93
		S	19 513	98 349	884 967	4 375 510	45.35	43.19
Powerex Corp.	Permit 116	I	65 006	722 353	3 376 010	40 248 855	51.93	54.75

Footnotes:

1. Includes capacity and energy charges.
2. Average value for the month and the last 12 months (excludes capacity charge).

- F - Firm Sales
- I - Interruptible Sales
- P - Purchase (Import)
- N - Non-Revenue (Non-Revenue or Inadvertent)
- S - Service (Spinning Reserve, Storage, Unit Rental, Transmission, etc.)



## TABLE 2A

### Export Summary Report by Source, Authorization and Exchange Type

Source	Authorization	Exchange Type	Energy (MW.h)		Revenue (CAN\$) <sup>1</sup>		CAN\$/MW.h <sup>2</sup>	
			NOV07	JAN07 - NOV07	NOV07	JAN07 - NOV07	NOV07	L12M
Rainbow	Permit 263	I	6 251	94 007	270 376	4 958 808	43.25	52.75
Saracen Merchan	Permit 276	I	8 519	129 687	466 372	9 768 519	54.74	74.74
Sempra Corp	Permit 157	F	2 814	56 288	121 733	3 215 983	43.26	56.61
SESCO	Permit 249	F	8 298	63 745	338 789	3 082 841	40.83	49.18
SIG-H LLC	Permit 291	F	13 640	13 640	829 455	829 455	60.81	60.81
Silverhill	Permit 279	F	35 725	142 206	1 998 513	8 835 356	55.94	61.96
TransAlta Ener	Permit 168	F	43 958	1 548 114	2 275 415	81 682 757	51.76	51.88
WPS Energy	Permit 250	I	0	12 903	0	497 399	0.00	38.55
<b>Subtotal Firm and Interruptible Exports: Ontario</b>			<b>760 632</b>	<b>9 332 636</b>	<b>37 617 617</b>	<b>498 798 802</b>	<b>49.20</b>	<b>52.38</b>
<b>Quebec</b>								
Brookfield EMI	Permit 112	F	0	718 827	0	56 087 154	0.00	71.25
	Permit 303	F	83 813	428 081	5 346 462	30 179 564	58.65	63.14
Hydro-Quebec	Licence 180	F	88 875	1 110 592	6 186 816	79 803 201	30.22	33.29
	Licence 181	F	14 954	188 464	942 245	12 291 317	30.22	33.27
	Licence 182	F	13 563	171 584	851 176	11 128 811	30.22	33.28
	Licence 183	F	24 385	297 564	1 670 734	21 335 980	30.22	33.31

Footnotes:

1. Includes capacity and energy charges.
2. Average value for the month and the last 12 months (excludes capacity charge).

- F - Firm Sales
- I - Interruptible Sales
- P - Purchase (Import)
- N - Non-Revenue (Non-Revenue or Inadvertent)
- S - Service (Spinning Reserve, Storage, Unit Rental, Transmission, etc.)



## TABLE 2A

### Export Summary Report by Source, Authorization and Exchange Type

Source	Authorization	Exchange Type	Energy (MW.h)		Revenue (CAN\$) <sup>1</sup>		CAN\$/MW.h <sup>2</sup>	
			NOV07	JAN07 - NOV07	NOV07	JAN07 - NOV07	NOV07	L12M
Hydro-Quebec	Licence 184	F	15 198	192 746	1 093 270	14 179 424	30.22	33.28
	Permit 20	F	0	1 101	0	88 778	0.00	80.44
	Permit 64	I	1 049 431	9 460 894	70 829 029	784 245 016	64.80	76.68
	Permit 65	F	18 437	1 048 525	1 103 419	66 698 385	59.85	63.61
MEHQ	Permit 129	I	58 286	895 635	2 528 299	49 806 356	43.38	56.55
Powerex Corp.	Permit 116	I	0	171 459	0	9 986 679	0.00	58.25
Silverhill	Permit 279	F	131	2 265	6 241	136 999	47.64	55.80
TransCanada PM	Permit 185	F	0	385 848	0	20 750 314	0.00	53.78
<b>Subtotal Firm and Interruptible Exports: Quebec</b>			<b>1 367 073</b>	<b>15 073 585</b>	<b>90 557 693</b>	<b>1 156 717 978</b>	<b>59.47</b>	<b>67.70</b>
<b>Saskatchewan</b>								
Northpoint	Permit 282	I	7 847	372 143	521 166	20 990 201	66.42	55.25
Powerex Corp.	Permit 116	I	9	9 297	427	545 905	47.45	58.72
<b>Subtotal Firm and Interruptible Exports: Saskatchewan</b>			<b>7 856</b>	<b>381 440</b>	<b>521 593</b>	<b>21 536 105</b>	<b>66.39</b>	<b>55.33</b>
<b>Total Firm and Interruptible Exports:</b>			<b>4 117 188</b>	<b>46 275 130</b>	<b>231 043 737</b>	<b>2 872 114 042</b>	<b>53.69</b>	<b>59.17</b>

Footnotes:

1. Includes capacity and energy charges.
2. Average value for the month and the last 12 months (excludes capacity charge).

- F - Firm Sales
- I - Interruptible Sales
- P - Purchase (Import)
- N - Non-Revenue (Non-Revenue or Inadvertent)
- S - Service (Spinning Reserve, Storage, Unit Rental, Transmission, etc.)



## TABLE 2B

### Import Summary Report

#### by Destination, Authorization and Exchange Type

Destination	Authorization	Exchange Type	Energy (MW.h)		Revenue (CAN\$) <sup>1</sup>		CAN\$/MW.h <sup>2</sup>	
			NOV07	JAN07 - NOV07	NOV07	JAN07 - NOV07	NOV07	L12M
<b>Alberta</b>								
Candela Energy	-	P	410	7 740	46 426	831 606	113.23	110.12
Cargill Trading		P	727	10 733	85 008	892 865	116.93	87.05
CITIGROUP		P	175	1 069	12 412	69 190	70.93	64.72
Constell ECG		P	0	265	0	27 247	0.00	102.82
Enmax Marketing		P	2 415	18 733	175 709	1 192 857	72.76	65.73
EPCOR Merchant		P	817	106 465	55 796	6 072 133	68.29	57.33
Merrill-Lynch		P	0	1 100	0	70 394	0.00	63.99
Morgan Stanley		P	50	3 615	1 726	248 852	34.52	68.84
Northpoint		P	64 055	304 560	3 906 003	18 219 485	60.98	59.82
Powerex Corp.		P	236	13 223	9 813	443 864	41.58	33.57
TransAlta Ener		P	1 060	52 619	57 631	2 910 513	54.37	55.59
TransCan ULC		P	675	11 402	50 725	849 087	75.15	74.47
TransCanada Ene		P	0	38 986	0	2 182 541	0.00	56.88
<b>Subtotal Purchased Imports: Alberta</b>			<b>70 620</b>	<b>570 510</b>	<b>4 401 250</b>	<b>34 010 634</b>	<b>62.32</b>	<b>60.01</b>

Footnotes:

1. Includes capacity and energy charges.
2. Average value for the month and the last 12 months (excludes capacity charge).

- F - Firm Sales
- I - Interruptible Sales
- P - Purchase (Import)
- N - Non-Revenue (Non-Revenue or Inadvertent)
- S - Service (Spinning Reserve, Storage, Unit Rental, Transmission, etc.)



## TABLE 2B

### Import Summary Report by Destination, Authorization and Exchange Type

Destination	Authorization	Exchange Type	Energy (MW.h)		Revenue (CAN\$) <sup>1</sup>		CAN\$/MW.h <sup>2</sup>	
			NOV07	JAN07 - NOV07	NOV07	JAN07 - NOV07	NOV07	L12M
<b>British Columbia</b>								
BC Hydro	-	N	- 489 861	-5 171 931	0	0	0.00	0.00
		S	5 239	84 724	0	0	0.00	0.00
FortisBC		P	1 508	34 364	107 927	857 160	71.57	26.63
Northpoint		P	0	575	0	32 160	0.00	55.93
Powerex Corp.		P	577 004	6 603 519	30 654 571	334 063 564	53.13	51.39
Teck Cominco		P	4 015	68 680	253 821	3 056 930	63.22	44.74
<b>Subtotal Purchased Imports: British Columbia</b>			<b>582 527</b>	<b>6 707 138</b>	<b>31 016 318</b>	<b>338 009 813</b>	<b>53.24</b>	<b>51.21</b>
<b>Manitoba</b>								
Detroit Edison		P	27	371	1 828	20 413	67.69	55.02
Manitoba Hydro		N	0	4 013	0	0	0.00	0.00
		P	536	511 854	54 699	25 822 762	102.05	49.94
Powerex Corp.		P	0	294	0	7 151	0.00	24.32
<b>Subtotal Purchased Imports: Manitoba</b>			<b>563</b>	<b>512 519</b>	<b>56 526</b>	<b>25 850 326</b>	<b>100.40</b>	<b>49.93</b>

Footnotes:

1. Includes capacity and energy charges.
2. Average value for the month and the last 12 months (excludes capacity charge).

- F - Firm Sales
- I - Interruptible Sales
- P - Purchase (Import)
- N - Non-Revenue (Non-Revenue or Inadvertent)
- S - Service (Spinning Reserve, Storage, Unit Rental, Transmission, etc.)



## TABLE 2B

### Import Summary Report

#### by Destination, Authorization and Exchange Type

Destination	Authorization	Exchange Type	Energy (MW.h)		Revenue (CAN\$) <sup>1</sup>		CAN\$/MW.h <sup>2</sup>	
			NOV07	JAN07 - NOV07	NOV07	JAN07 - NOV07	NOV07	L12M
<b>New Brunswick</b>								
Brookfield EMI	-	P	0	4 675	0	269 989	0.00	57.75
Emera Energy		P	36 606	431 010	2 170 479	28 614 089	59.29	65.58
NB Power		P	4 550	73 293	227 179	4 058 428	49.93	56.36
WPS Power Dev.		P	1 135	12 735	61 559	588 903	54.26	45.93
<b>Subtotal Purchased Imports: New Brunswick</b>			<b>42 291</b>	<b>521 713</b>	<b>2 459 217</b>	<b>33 531 409</b>	<b>58.15</b>	<b>63.43</b>
<b>Nova Scotia</b>								
NS Power Inc.		P	5 998	51 812	493 196	4 103 454	82.23	78.08
<b>Subtotal Purchased Imports: Nova Scotia</b>			<b>5 998</b>	<b>51 812</b>	<b>493 196</b>	<b>4 103 454</b>	<b>82.23</b>	<b>78.08</b>
<b>Ontario</b>								
2001 RBCP		P	8 178	9 921	404 755	501 904	49.49	50.59
Allete, Inc.		P	0	4 785	0	196 311	0.00	41.19
Brookfield EMI		P	1 419	28 157	99 462	1 691 419	70.09	62.83

Footnotes:

1. Includes capacity and energy charges.
2. Average value for the month and the last 12 months (excludes capacity charge).

- F - Firm Sales
- I - Interruptible Sales
- P - Purchase (Import)
- N - Non-Revenue (Non-Revenue or Inadvertent)
- S - Service (Spinning Reserve, Storage, Unit Rental, Transmission, etc.)



## TABLE 2B

### Import Summary Report

#### by Destination, Authorization and Exchange Type

Destination	Authorization	Exchange Type	Energy (MW.h)		Revenue (CAN\$) <sup>1</sup>		CAN\$/MW.h <sup>2</sup>	
			NOV07	JAN07 - NOV07	NOV07	JAN07 - NOV07	NOV07	L12M
Cargill Trading	-	P	246 446	1 187 902	12 352 662	64 241 301	50.12	53.98
Cincinnati G&E		P	0	55 197	0	3 240 076	0.00	59.24
CITIGROUP		P	1 072	1 077	73 177	73 511	68.26	68.26
Constell ECG		P	17 379	57 594	1 066 823	3 951 457	61.39	68.55
Constell NE		P	32 826	131 231	1 449 734	6 458 394	44.16	49.79
Coral Energy		P	0	8 367	0	619 159	0.00	73.64
D&W Subway		P	0	423	0	0	0.00	0.00
Direct EM Inc.		P	0	1 992	0	151 892	0.00	76.65
DTE Energy Trad		P	182 850	645 129	8 340 551	34 208 298	45.61	53.06
EPCOR Merchant		P	13 852	115 157	753 722	6 528 425	54.41	56.58
FB Energy		P	6 897	76 047	505 767	5 442 435	73.33	71.57
First Com Ltd		P	0	3 954	0	292 309	0.00	75.09
Fortis Energy M		P	0	12 576	0	1 103 766	0.00	87.77
IESO		P	0	1 100	0	292 005	0.00	265.46

Footnotes:

1. Includes capacity and energy charges.
2. Average value for the month and the last 12 months (excludes capacity charge).

- F - Firm Sales
- I - Interruptible Sales
- P - Purchase (Import)
- N - Non-Revenue (Non-Revenue or Inadvertent)
- S - Service (Spinning Reserve, Storage, Unit Rental, Transmission, etc.)



## TABLE 2B

### Import Summary Report

#### by Destination, Authorization and Exchange Type

Destination	Authorization	Exchange Type	Energy (MW.h)		Revenue (CAN\$) <sup>1</sup>		CAN\$/MW.h <sup>2</sup>	
			NOV07	JAN07 - NOV07	NOV07	JAN07 - NOV07	NOV07	L12M
Ind Elc Mark Op	-	N	187 031	240 716	0	0	0.00	0.00
Integritys		P	10 234	24 274	465 891	1 173 682	45.52	48.35
Lehman Brothers		P	0	100	0	6 600	0.00	66.00
MAG Energy Sol.		P	37 373	194 659	2 394 789	14 606 886	64.08	74.37
Manitoba Hydro		P	270 260	2 192 662	12 565 584	105 280 565	46.49	47.07
Merrill-Lynch		P	776	20 819	49 351	1 319 105	63.60	63.94
Northern States		P	0	124 569	0	4 204 457	0.00	34.75
Northpoint		P	3 583	167 742	199 211	8 348 186	55.60	49.77
NRG Power Mktg		P	0	20	0	1 604	0.00	80.22
OPGI/OHIM		P	68 329	409 608	2 322 085	15 528 084	33.98	37.53
		S	0	26 744	0	1 525 832	0.00	57.05
Powerex Corp.		P	22 231	200 079	974 809	12 093 631	43.85	60.13
Rainbow		P	1 968	5 673	82 636	374 762	41.99	66.06
Sempra Corp		P	243	3 901	17 938	247 109	73.82	61.39
SESCO		P	1 170	17 728	99 072	1 273 016	84.68	69.92

Footnotes:

1. Includes capacity and energy charges.
2. Average value for the month and the last 12 months (excludes capacity charge).

- F - Firm Sales
- I - Interruptible Sales
- P - Purchase (Import)
- N - Non-Revenue (Non-Revenue or Inadvertent)
- S - Service (Spinning Reserve, Storage, Unit Rental, Transmission, etc.)



## TABLE 2B

### Import Summary Report by Destination, Authorization and Exchange Type

Destination	Authorization	Exchange Type	Energy (MW.h)		Revenue (CAN\$) <sup>1</sup>		CAN\$/MW.h <sup>2</sup>	
			NOV07	JAN07 - NOV07	NOV07	JAN07 - NOV07	NOV07	L12M
SIG-H LLC	-	P	1	1	42	42	41.63	41.63
Silverhill		P	13 582	83 926	624 372	4 741 933	45.97	57.26
TransAlta Ener		P	12 806	42 586	607 416	2 291 702	47.43	53.89
WPS Energy		P	0	37 775	0	1 672 638	0.00	44.28
<b>Subtotal Purchased Imports: Ontario</b>			<b>953 475</b>	<b>5 866 731</b>	<b>45 449 849</b>	<b>302 156 662</b>	<b>47.67</b>	<b>51.05</b>
<b>Quebec</b>								
Brookfield EMI		P	0	11 099	0	441 359	0.00	39.77
Hydro-Quebec		P	77 933	2 888 376	3 488 920	165 292 088	44.77	57.21
MEHQ		P	3 166	213 310	178 738	10 433 354	56.46	49.87
Powerex Corp.		P	28	8 867	1 697	347 361	60.60	39.17
Silverhill		P	138	2 388	8 615	105 380	62.43	38.82
<b>Subtotal Purchased Imports: Quebec</b>			<b>81 265</b>	<b>3 124 040</b>	<b>3 677 970</b>	<b>176 619 543</b>	<b>45.26</b>	<b>56.57</b>
<b>Saskatchewan</b>								

Footnotes:

1. Includes capacity and energy charges.
2. Average value for the month and the last 12 months (excludes capacity charge).

- F - Firm Sales
- I - Interruptible Sales
- P - Purchase (Import)
- N - Non-Revenue (Non-Revenue or Inadvertent)
- S - Service (Spinning Reserve, Storage, Unit Rental, Transmission, etc.)



## TABLE 2B

### Import Summary Report

#### by Destination, Authorization and Exchange Type

Destination	Authorization	Exchange Type	Energy (MW.h)		Revenue (CAN\$) <sup>1</sup>		CAN\$/MW.h <sup>2</sup>	
			NOV07	JAN07 - NOV07	NOV07	JAN07 - NOV07	NOV07	L12M
Northpoint	-	P	31 629	173 712	1 028 956	6 534 748	32.53	42.11
Powerex Corp.		P	283	5 304	6 147	160 220	21.72	30.21
<b>Subtotal Purchased Imports: Saskatchewan</b>			<b>31 912</b>	<b>179 016</b>	<b>1 035 103</b>	<b>6 694 968</b>	<b>32.44</b>	<b>41.85</b>
<b>Total Purchased Imports:</b>			<b>1 768 651</b>	<b>17 533 479</b>	<b>88 589 430</b>	<b>920 976 809</b>	<b>50.09</b>	<b>52.61</b>

Footnotes:

1. Includes capacity and energy charges.
2. Average value for the month and the last 12 months (excludes capacity charge).

- F - Firm Sales
- I - Interruptible Sales
- P - Purchase (Import)
- N - Non-Revenue (Non-Revenue or Inadvertent)
- S - Service (Spinning Reserve, Storage, Unit Rental, Transmission, etc.)



National Energy Board  
Office national de l'énergie

## TABLE 3A

### Export Sales Summary Report by Destination and Source

Page 1  
08/02/08

Destination	Source	Energy (MW.h)		Revenue (CAN\$) <sup>1</sup>		CAN\$/MW.h <sup>2</sup>	
		NOV07	JAN07 - NOV07	NOV07	JAN07 - NOV07	NOV07	L12M
<b>Alaska</b>	British Columbia	93	1 168	6 666	83 795	71.58	71.74
<b>Subtotal Exports: Alaska</b>		<b>93</b>	<b>1 168</b>	<b>6 666</b>	<b>83 795</b>	<b>71.58</b>	<b>71.74</b>
<b>Arizona</b>	British Columbia	13 610	191 642	1 059 349	14 596 938	77.84	76.11
<b>Subtotal Exports: Arizona</b>		<b>13 610</b>	<b>191 642</b>	<b>1 059 349</b>	<b>14 596 938</b>	<b>77.84</b>	<b>76.11</b>
<b>California</b>	British Columbia	116 366	4 355 814	7 704 093	278 436 774	66.21	64.13
<b>Subtotal Exports: California</b>		<b>116 366</b>	<b>4 355 814</b>	<b>7 704 093</b>	<b>278 436 774</b>	<b>66.21</b>	<b>64.13</b>
<b>Colorado</b>	British Columbia	334	568	17 648	39 251	52.84	69.10
<b>Subtotal Exports: Colorado</b>		<b>334</b>	<b>568</b>	<b>17 648</b>	<b>39 251</b>	<b>52.84</b>	<b>69.10</b>
<b>Idaho</b>	British Columbia	2 280	93 708	195 967	7 250 180	85.95	77.70
<b>Subtotal Exports: Idaho</b>		<b>2 280</b>	<b>93 708</b>	<b>195 967</b>	<b>7 250 180</b>	<b>85.95</b>	<b>77.70</b>
<b>Illinois</b>	Ontario	3 433	47 728	154 386	2 462 739	44.97	51.60
<b>Subtotal Exports: Illinois</b>		<b>3 433</b>	<b>47 728</b>	<b>154 386</b>	<b>2 462 739</b>	<b>44.97</b>	<b>51.60</b>
<b>Indiana</b>	Alberta	0	6 398	0	489 293	0.00	76.48
	British Columbia	1 715	21 912	99 124	1 505 289	57.80	68.70
	Manitoba	0	5	0	96	0.00	19.13
	Ontario	1 730	36 489	91 952	2 316 703	53.15	64.41
	Saskatchewan	9	9 159	427	536 610	47.45	58.59
<b>Subtotal Exports: Indiana</b>		<b>3 454</b>	<b>73 963</b>	<b>191 503</b>	<b>4 847 992</b>	<b>55.44</b>	<b>65.97</b>
<b>Kansas</b>	Ontario	0	300	0	13 750	0.00	45.83
<b>Subtotal Exports: Kansas</b>		<b>0</b>	<b>300</b>	<b>0</b>	<b>13 750</b>	<b>0.00</b>	<b>45.83</b>
<b>Maine</b>	New Brunswick	137 863	1 401 231	9 232 331	95 961 451	62.97	66.11

Footnotes:

1. Includes capacity and energy charges.
2. Average value for the month and the last 12 months (excludes capacity charge).



National Energy Board  
Office national de l'énergie

## TABLE 3A

### Export Sales Summary Report by Destination and Source

Page 2  
08/02/08

Destination	Source	Energy (MW.h)		Revenue (CAN\$) <sup>1</sup>		CAN\$/MW.h <sup>2</sup>	
		NOV07	JAN07 - NOV07	NOV07	JAN07 - NOV07	NOV07	L12M
<b>Maine</b>	Nova Scotia	1 889	30 299	85 323	1 607 452	45.17	51.55
	Quebec	0	149 753	0	15 123 946	0.00	92.80
<b>Subtotal Exports: Maine</b>		<b>139 752</b>	<b>1 581 283</b>	<b>9 317 654</b>	<b>112 692 849</b>	<b>62.73</b>	<b>69.25</b>
<b>Massachusetts</b>	Ontario	0	4 715	0	326 526	0.00	69.12
	Quebec	0	39 095	0	2 863 795	0.00	73.25
<b>Subtotal Exports: Massachusetts</b>		<b>0</b>	<b>43 810</b>	<b>0</b>	<b>3 190 320</b>	<b>0.00</b>	<b>72.50</b>
<b>Michigan</b>	Manitoba	24	36	1 366	1 438	56.91	39.95
	Ontario	87 191	1 490 512	4 806 929	86 832 993	55.13	58.20
<b>Subtotal Exports: Michigan</b>		<b>87 215</b>	<b>1 490 548</b>	<b>4 808 295</b>	<b>86 834 431</b>	<b>55.13</b>	<b>58.20</b>
<b>Minnesota</b>	Manitoba	135 130	1 095 978	6 523 349	57 400 904	48.27	51.13
	Ontario	21 095	336 872	1 052 322	16 857 971	47.18	48.42
<b>Subtotal Exports: Minnesota</b>		<b>156 225</b>	<b>1 432 850</b>	<b>7 575 671</b>	<b>74 258 875</b>	<b>48.13</b>	<b>50.52</b>
<b>Missouri</b>	British Columbia	0	246	0	13 680	0.00	55.61
	Ontario	155	588	8 327	31 843	53.72	54.15
<b>Subtotal Exports: Missouri</b>		<b>155</b>	<b>834</b>	<b>8 327</b>	<b>45 523</b>	<b>53.72</b>	<b>54.58</b>
<b>Montana</b>	British Columbia	6 947	81 260	429 640	5 062 384	61.85	61.99
<b>Subtotal Exports: Montana</b>		<b>6 947</b>	<b>81 260</b>	<b>429 640</b>	<b>5 062 384</b>	<b>61.85</b>	<b>61.99</b>
<b>ND/Minn</b>	Manitoba	901 886	9 339 339	38 256 309	448 788 305	42.42	48.77
<b>Subtotal Exports: ND/Minn</b>		<b>901 886</b>	<b>9 339 339</b>	<b>38 256 309</b>	<b>448 788 305</b>	<b>42.42</b>	<b>48.77</b>
<b>Nebraska</b>	British Columbia	36	147	0	0	0.00	0.00
	Ontario	0	9 615	0	637 372	0.00	66.29
<b>Subtotal Exports: Nebraska</b>		<b>36</b>	<b>9 762</b>	<b>0</b>	<b>637 372</b>	<b>0.00</b>	<b>65.29</b>

Footnotes:

1. Includes capacity and energy charges.
2. Average value for the month and the last 12 months (excludes capacity charge).



National Energy Board  
Office national de l'énergie

## TABLE 3A

### Export Sales Summary Report by Destination and Source

Page 3  
08/02/08

Destination	Source	Energy (MW.h)		Revenue (CAN\$) <sup>1</sup>		CAN\$/MW.h <sup>2</sup>	
		NOV07	JAN07 - NOV07	NOV07	JAN07 - NOV07	NOV07	L12M
<b>Nevada</b>	British Columbia	3 116	339 827	222 319	27 750 079	71.35	81.61
<b>Subtotal Exports: Nevada</b>		<b>3 116</b>	<b>339 827</b>	<b>222 319</b>	<b>27 750 079</b>	<b>71.35</b>	<b>81.61</b>
<b>New England</b>	New Brunswick	0	98	0	5 557	0.00	56.70
	Ontario	0	201 111	0	10 461 581	0.00	51.98
	Quebec	601 726	6 269 904	40 590 676	527 594 586	64.73	78.48
<b>Subtotal Exports: New England</b>		<b>601 726</b>	<b>6 471 113</b>	<b>40 590 676</b>	<b>538 061 724</b>	<b>64.73</b>	<b>77.74</b>
<b>New Mexico</b>	British Columbia	2 360	31 883	184 534	2 587 070	78.19	81.79
<b>Subtotal Exports: New Mexico</b>		<b>2 360</b>	<b>31 883</b>	<b>184 534</b>	<b>2 587 070</b>	<b>78.19</b>	<b>81.79</b>
<b>New York</b>	Alberta	0	154	0	9 219	0.00	59.86
	New Brunswick	34 958	132 045	1 936 040	7 538 811	55.38	57.09
	Ontario	634 772	6 687 694	30 750 432	345 814 021	48.23	50.45
	Quebec	605 621	6 606 998	39 027 823	468 325 775	61.77	66.58
<b>Subtotal Exports: New York</b>		<b>1 275 351</b>	<b>13 426 891</b>	<b>71 714 296</b>	<b>821 687 826</b>	<b>54.86</b>	<b>58.54</b>
<b>North Dakota</b>	Alberta	5 103	17 276	272 475	1 256 326	53.39	72.72
	Saskatchewan	7 847	372 143	521 166	20 990 201	66.42	55.25
<b>Subtotal Exports: North Dakota</b>		<b>12 950</b>	<b>389 419</b>	<b>793 641</b>	<b>22 246 526</b>	<b>61.28</b>	<b>55.95</b>
<b>Ohio</b>	Ontario	0	361 048	0	22 275 244	0.00	59.73
<b>Subtotal Exports: Ohio</b>		<b>0</b>	<b>361 048</b>	<b>0</b>	<b>22 275 244</b>	<b>0.00</b>	<b>59.73</b>
<b>Oregon</b>	Alberta	0	808	0	28 417	0.00	36.60
	British Columbia	135 375	1 261 945	8 242 068	84 895 086	60.88	67.49
<b>Subtotal Exports: Oregon</b>		<b>135 375</b>	<b>1 262 753</b>	<b>8 242 068</b>	<b>84 923 502</b>	<b>60.88</b>	<b>67.47</b>

Footnotes:

1. Includes capacity and energy charges.
2. Average value for the month and the last 12 months (excludes capacity charge).



National Energy Board  
Office national de l'énergie

## TABLE 3A

### Export Sales Summary Report by Destination and Source

Page 4  
08/02/08

Destination	Source	Energy (MW.h)		Revenue (CAN\$) <sup>1</sup>		CAN\$/MW.h <sup>2</sup>	
		NOV07	JAN07 - NOV07	NOV07	JAN07 - NOV07	NOV07	L12M
<b>Pennsylvania</b>	Alberta	0	54	0	2 266	0.00	41.96
	British Columbia	220	891	11 728	84 381	53.31	94.70
	Ontario	10 434	95 049	657 022	6 458 777	62.97	67.60
	Saskatchewan	0	138	0	9 294	0.00	67.35
<b>Subtotal Exports: Pennsylvania</b>		<b>10 654</b>	<b>96 132</b>	<b>668 750</b>	<b>6 554 718</b>	<b>62.77</b>	<b>67.84</b>
<b>Texas</b>	British Columbia	0	40	0	2 838	0.00	70.95
	Ontario	1 822	58 275	96 246	4 174 833	52.82	71.64
<b>Subtotal Exports: Texas</b>		<b>1 822</b>	<b>58 315</b>	<b>96 246</b>	<b>4 177 671</b>	<b>52.82</b>	<b>71.64</b>
<b>Utah</b>	British Columbia	1 344	20 638	109 559	1 605 229	81.52	78.06
<b>Subtotal Exports: Utah</b>		<b>1 344</b>	<b>20 638</b>	<b>109 559</b>	<b>1 605 229</b>	<b>81.52</b>	<b>78.06</b>
<b>Vermont</b>	Ontario	0	2 640	0	134 449	0.00	51.75
	Quebec	159 726	2 007 835	10 939 194	142 809 877	30.92	34.56
<b>Subtotal Exports: Vermont</b>		<b>159 726</b>	<b>2 010 475</b>	<b>10 939 194</b>	<b>142 944 326</b>	<b>30.92</b>	<b>34.73</b>
<b>Washington</b>	Alberta	53 148	193 785	3 005 905	9 587 347	56.56	49.94
	British Columbia	425 370	2 839 398	24 553 533	146 001 714	57.72	53.29
<b>Subtotal Exports: Washington</b>		<b>478 518</b>	<b>3 033 183</b>	<b>27 559 438</b>	<b>155 589 060</b>	<b>57.59</b>	<b>53.09</b>
<b>Wisconsin</b>	British Columbia	0	80	0	0	0.00	0.00
<b>Subtotal Exports: Wisconsin</b>		<b>0</b>	<b>80</b>	<b>0</b>	<b>0</b>	<b>0.00</b>	<b>0.00</b>
<b>Wyoming</b>	British Columbia	2 461	28 797	197 511	2 469 589	80.26	87.12
<b>Subtotal Exports: Wyoming</b>		<b>2 461</b>	<b>28 797</b>	<b>197 511</b>	<b>2 469 589</b>	<b>80.26</b>	<b>87.12</b>
<b>Total Exports</b>		<b>4 117 188</b>	<b>46 275 130</b>	<b>231 043 737</b>	<b>2 872 114 042</b>	<b>53.69</b>	<b>59.17</b>

Footnotes:

1. Includes capacity and energy charges.
2. Average value for the month and the last 12 months (excludes capacity charge).



## TABLE 3B

### Import Purchases Summary Report by Source and Destination

Source	Destination	Energy (MW.h)		Revenue (CAN\$) <sup>1</sup>		CAN\$/MW.h <sup>2</sup>	
		NOV07	JAN07 - NOV07	NOV07	JAN07 - NOV07	NOV07	L12M
<b>Arizona</b>	British Columbia	26 640	135 018	1 006 239	4 706 548	37.77	35.73
<b>Subtotal Imports: Arizona</b>		<b>26 640</b>	<b>135 018</b>	<b>1 006 239</b>	<b>4 706 548</b>	<b>37.77</b>	<b>35.73</b>
<b>California</b>	British Columbia	36 243	66 909	1 819 983	3 469 530	50.22	54.19
<b>Subtotal Imports: California</b>		<b>36 243</b>	<b>66 909</b>	<b>1 819 983</b>	<b>3 469 530</b>	<b>50.22</b>	<b>54.19</b>
<b>Colorado</b>	British Columbia	10	1 679	232	64 240	23.23	38.26
<b>Subtotal Imports: Colorado</b>		<b>10</b>	<b>1 679</b>	<b>232</b>	<b>64 240</b>	<b>23.23</b>	<b>38.26</b>
<b>Idaho</b>	British Columbia	3 756	43 849	115 145	1 460 014	30.66	33.30
<b>Subtotal Imports: Idaho</b>		<b>3 756</b>	<b>43 849</b>	<b>115 145</b>	<b>1 460 014</b>	<b>30.66</b>	<b>33.30</b>
<b>Illinois</b>	Ontario	1 943	4 299	80 411	295 583	41.39	68.76
<b>Subtotal Imports: Illinois</b>		<b>1 943</b>	<b>4 299</b>	<b>80 411</b>	<b>295 583</b>	<b>41.39</b>	<b>68.76</b>
<b>Indiana</b>	Alberta	236	13 012	9 813	440 362	41.58	33.84
	British Columbia	3 172	5 218	75 115	125 351	23.68	24.02
	Manitoba	0	294	0	7 151	0.00	24.32
	Ontario	18 996	57 949	756 876	2 711 677	39.84	46.79
	Saskatchewan	274	5 209	5 949	157 704	21.71	30.28
<b>Subtotal Imports: Indiana</b>		<b>22 678</b>	<b>81 682</b>	<b>847 754</b>	<b>3 442 244</b>	<b>37.38</b>	<b>42.14</b>
<b>Iowa</b>	British Columbia	0	9	0	0	0.00	0.00
<b>Subtotal Imports: Iowa</b>		<b>0</b>	<b>9</b>	<b>0</b>	<b>0</b>	<b>0.00</b>	<b>0.00</b>
<b>Maine</b>	New Brunswick	42 291	517 038	2 459 217	33 261 420	58.15	63.47
	Quebec	0	2 084	0	106 370	0.00	51.04
<b>Subtotal Imports: Maine</b>		<b>42 291</b>	<b>519 122</b>	<b>2 459 217</b>	<b>33 367 790</b>	<b>58.15</b>	<b>63.43</b>

Footnotes:

1. Includes capacity and energy charges.
2. Average value for the month and the last 12 months (excludes capacity charge).



National Energy Board  
Office national de l'énergie

## TABLE 3B

### Import Purchases Summary Report by Source and Destination

Page 6  
08/02/08

Source	Destination	Energy (MW.h)		Revenue (CAN\$) <sup>1</sup>		CAN\$/MW.h <sup>2</sup>	
		NOV07	JAN07 - NOV07	NOV07	JAN07 - NOV07	NOV07	L12M
<b>Massachusetts</b>	Ontario	651	9 429	36 775	703 560	56.49	75.90
	Quebec	4	83	239	6 263	59.74	75.46
<b>Subtotal Imports: Massachusetts</b>		<b>655</b>	<b>9 512</b>	<b>37 014</b>	<b>709 823</b>	<b>56.51</b>	<b>75.89</b>
<b>Michigan</b>	Manitoba	27	371	1 828	20 413	67.69	55.02
	Ontario	436 796	2 417 442	19 022 432	111 941 008	43.55	45.88
<b>Subtotal Imports: Michigan</b>		<b>436 823</b>	<b>2 417 813</b>	<b>19 024 260</b>	<b>111 961 421</b>	<b>43.55</b>	<b>45.89</b>
<b>Minnesota</b>	Alberta	727	10 733	85 008	892 865	116.93	87.05
	Ontario	381 978	2 482 429	18 901 811	129 056 238	49.48	51.44
<b>Subtotal Imports: Minnesota</b>		<b>382 705</b>	<b>2 493 162</b>	<b>18 986 819</b>	<b>129 949 103</b>	<b>49.61</b>	<b>51.61</b>
<b>Missouri</b>	Ontario	0	300	0	6 401	0.00	21.34
<b>Subtotal Imports: Missouri</b>		<b>0</b>	<b>300</b>	<b>0</b>	<b>6 401</b>	<b>0.00</b>	<b>21.34</b>
<b>Montana</b>	British Columbia	9 843	140 387	424 338	5 942 215	43.11	39.67
<b>Subtotal Imports: Montana</b>		<b>9 843</b>	<b>140 387</b>	<b>424 338</b>	<b>5 942 215</b>	<b>43.11</b>	<b>39.67</b>
<b>ND/Minn</b>	Manitoba	536	511 854	54 699	25 822 762	102.05	49.94
<b>Subtotal Imports: ND/Minn</b>		<b>536</b>	<b>511 854</b>	<b>54 699</b>	<b>25 822 762</b>	<b>102.05</b>	<b>49.94</b>
<b>Nebraska</b>	British Columbia	84	611	1 452	8 059	17.29	25.82
<b>Subtotal Imports: Nebraska</b>		<b>84</b>	<b>611</b>	<b>1 452</b>	<b>8 059</b>	<b>17.29</b>	<b>25.82</b>
<b>Nevada</b>	British Columbia	7 089	39 199	257 708	1 331 564	36.35	35.03
<b>Subtotal Imports: Nevada</b>		<b>7 089</b>	<b>39 199</b>	<b>257 708</b>	<b>1 331 564</b>	<b>36.35</b>	<b>35.03</b>
<b>New England</b>	Quebec	7 120	1 202 946	294 619	64 770 739	41.38	53.82
<b>Subtotal Imports: New England</b>		<b>7 120</b>	<b>1 202 946</b>	<b>294 619</b>	<b>64 770 739</b>	<b>41.38</b>	<b>53.82</b>

Footnotes:

1. Includes capacity and energy charges.
2. Average value for the month and the last 12 months (excludes capacity charge).



National Energy Board  
Office national de l'énergie

## TABLE 3B

### Import Purchases Summary Report by Source and Destination

Page 7  
08/02/08

Source	Destination	Energy (MW.h)		Revenue (CAN\$) <sup>1</sup>		CAN\$/MW.h <sup>2</sup>	
		NOV07	JAN07 - NOV07	NOV07	JAN07 - NOV07	NOV07	L12M
<b>New Mexico</b>	British Columbia	11 771	56 751	345 939	1 687 467	29.39	31.36
<b>Subtotal Imports: New Mexico</b>		<b>11 771</b>	<b>56 751</b>	<b>345 939</b>	<b>1 687 467</b>	<b>29.39</b>	<b>31.36</b>
<b>New York</b>	Alberta	50	3 615	1 726	248 852	34.52	68.84
	New Brunswick	0	4 675	0	269 989	0.00	57.75
	Ontario	104 889	728 083	6 062 672	46 293 741	57.80	63.53
	Quebec	74 141	1 914 855	3 383 112	111 591 655	45.63	58.35
<b>Subtotal Imports: New York</b>		<b>179 080</b>	<b>2 651 228</b>	<b>9 447 510</b>	<b>158 404 237</b>	<b>52.76</b>	<b>59.83</b>
<b>North Dakota</b>	Alberta	9 543	58 545	357 511	3 228 955	37.46	55.15
	Saskatchewan	31 629	173 712	1 028 956	6 534 748	32.53	42.11
<b>Subtotal Imports: North Dakota</b>		<b>41 172</b>	<b>232 257</b>	<b>1 386 467</b>	<b>9 763 703</b>	<b>33.68</b>	<b>44.65</b>
<b>Ohio</b>	Ontario	0	55 197	0	3 240 076	0.00	59.24
<b>Subtotal Imports: Ohio</b>		<b>0</b>	<b>55 197</b>	<b>0</b>	<b>3 240 076</b>	<b>0.00</b>	<b>59.24</b>
<b>Oregon</b>	British Columbia	26 535	192 692	1 138 840	7 826 880	42.92	41.54
<b>Subtotal Imports: Oregon</b>		<b>26 535</b>	<b>192 692</b>	<b>1 138 840</b>	<b>7 826 880</b>	<b>42.92</b>	<b>41.54</b>
<b>Pennsylvania</b>	Alberta	0	211	0	3 502	0.00	16.60
	British Columbia	42	799	922	33 461	21.95	41.88
	Nova Scotia	5 998	51 812	493 196	4 103 454	82.23	78.08
	Ontario	1 325	21 967	83 105	1 278 626	62.72	56.44
	Quebec	0	3 561	0	100 499	0.00	28.22
	Saskatchewan	9	95	198	2 516	21.95	26.48
<b>Subtotal Imports: Pennsylvania</b>		<b>7 374</b>	<b>78 445</b>	<b>577 421</b>	<b>5 522 057</b>	<b>78.30</b>	<b>68.72</b>
<b>South Dakota</b>	British Columbia	0	35	0	882	0.00	25.20
<b>Subtotal Imports: South Dakota</b>		<b>0</b>	<b>35</b>	<b>0</b>	<b>882</b>	<b>0.00</b>	<b>25.20</b>

Footnotes:

1. Includes capacity and energy charges.
2. Average value for the month and the last 12 months (excludes capacity charge).



National Energy Board  
Office national de l'énergie

## TABLE 3B

### Import Purchases Summary Report by Source and Destination

Page 8  
08/02/08

Source	Destination	Energy (MW.h)		Revenue (CAN\$) <sup>1</sup>		CAN\$/MW.h <sup>2</sup>	
		NOV07	JAN07 - NOV07	NOV07	JAN07 - NOV07	NOV07	L12M
<b>Texas</b>	Ontario	6 897	88 623	505 767	6 546 201	73.33	73.87
<b>Subtotal Imports: Texas</b>		<b>6 897</b>	<b>88 623</b>	<b>505 767</b>	<b>6 546 201</b>	<b>73.33</b>	<b>73.87</b>
<b>Utah</b>	British Columbia	5 291	37 078	195 141	1 465 739	36.88	39.61
<b>Subtotal Imports: Utah</b>		<b>5 291</b>	<b>37 078</b>	<b>195 141</b>	<b>1 465 739</b>	<b>36.88</b>	<b>39.61</b>
<b>Vermont</b>	Ontario	0	1 013	0	83 552	0.00	81.36
	Quebec	0	511	0	44 016	0.00	86.14
<b>Subtotal Imports: Vermont</b>		<b>0</b>	<b>1 524</b>	<b>0</b>	<b>127 568</b>	<b>0.00</b>	<b>82.15</b>
<b>Washington</b>	Alberta	60 064	484 394	3 947 191	29 196 099	65.72	60.56
	British Columbia	441 572	5 904 143	25 316 661	307 605 585	57.33	53.04
<b>Subtotal Imports: Washington</b>		<b>501 636</b>	<b>6 388 537</b>	<b>29 263 853</b>	<b>336 801 683</b>	<b>58.34</b>	<b>53.57</b>
<b>Wyoming</b>	British Columbia	10 479	82 761	318 602	2 282 280	30.40	27.63
<b>Subtotal Imports: Wyoming</b>		<b>10 479</b>	<b>82 761</b>	<b>318 602</b>	<b>2 282 280</b>	<b>30.40</b>	<b>27.63</b>
<b>Total Imports</b>		<b>1 768 651</b>	<b>17 533 479</b>	<b>88 589 430</b>	<b>920 976 809</b>	<b>50.09</b>	<b>52.61</b>

Footnotes:

1. Includes capacity and energy charges.
2. Average value for the month and the last 12 months (excludes capacity charge).



National Energy Board  
Office national de l'énergie

## TABLE 4 Source of Production Report Canadian Exports

Page 1  
08/02/08

Fuel Type	NOV07		
	Energy (MW.h)	Revenue (CAN\$) <sup>1</sup>	CAN\$/MW.h <sup>1</sup>
Canadian Coal	9 122	585 236	64.16
Hydraulic	2 311 426	120 368 145	52.08
Imported Coal	44 866	2 703 547	60.26
Imported Oil	24 374	1 587 511	65.13
Natural Gas	1 432	60 721	42.40
Other	1 216 223	67 850 240	55.79
<b>Total</b>	<b>3 607 443</b>	<b>193 155 399</b>	<b>53.54</b>

Footnotes:

1. Revenue figures are for illustrative purposes only and are strictly allocatable by energy source.



## TABLE 5 Source of Production Report by Exporter

Exporter	Fuel Type	Authorization	NOV07		
			Energy (MW.h)	Revenue (CAN\$) <sup>1</sup>	CAN\$/MW.h <sup>1</sup>
<b>2001 RBCP</b>	Other	Permit 315	17 508	899 386	51.37
		<b>Subtotal</b>	<b>17 508</b>	<b>899 386</b>	<b>51.37</b>
		<b>Subtotal</b>	<b>17 508</b>	<b>899 386</b>	<b>51.37</b>
<b>Allete, Inc.</b>	Other	Permit 261	4 368	270 606	61.95
		<b>Subtotal</b>	<b>4 368</b>	<b>270 606</b>	<b>61.95</b>
		<b>Subtotal</b>	<b>4 368</b>	<b>270 606</b>	<b>61.95</b>
<b>ATCO (AB &amp; AB)</b>	Other	Permit 287	217	7 522	34.66
		<b>Subtotal</b>	<b>217</b>	<b>7 522</b>	<b>34.66</b>
		<b>Subtotal</b>	<b>217</b>	<b>7 522</b>	<b>34.66</b>
<b>BC Hydro</b>	Hydraulic	Permit 192	42 241	0	0.00
		Permit 298	93	6 666	71.58
		Treaty 0	18 847	0	0.00
		<b>Subtotal</b>	<b>61 181</b>	<b>6 666</b>	<b>0.11</b>
		<b>Subtotal</b>	<b>61 181</b>	<b>6 666</b>	<b>0.11</b>
<b>Brookfield EMI</b>	Hydraulic	Permit 303	0	431 209	0.00
		<b>Subtotal</b>	<b>0</b>	<b>431 209</b>	<b>0.00</b>
	Other	Permit 303	160 634	8 480 151	52.79
		<b>Subtotal</b>	<b>160 634</b>	<b>8 480 151</b>	<b>52.79</b>
		<b>Subtotal</b>	<b>160 634</b>	<b>8 911 360</b>	<b>55.48</b>

Footnotes:

1. Revenue figures are for illustrative purposes only and are strictly allocatable by energy source.



## TABLE 5 Source of Production Report by Exporter

Exporter	Fuel Type	Authorization	NOV07		
			Energy (MW.h)	Revenue (CAN\$) <sup>1</sup>	CAN\$/MW.h <sup>1</sup>
<b>Bruce Power</b>	Other	Permit 299	102	5 739	56.26
		<b>Subtotal</b>	<b>102</b>	<b>5 739</b>	<b>56.26</b>
	<b>Subtotal</b>		<b>102</b>	<b>5 739</b>	<b>56.26</b>
<b>Cargill Trading</b>	Other	Permit 204	2 769	143 466	51.81
		<b>Subtotal</b>	<b>2 769</b>	<b>143 466</b>	<b>51.81</b>
	<b>Subtotal</b>		<b>2 769</b>	<b>143 466</b>	<b>51.81</b>
<b>CITIGROUP</b>	Other	Permit 308	7 357	417 202	56.71
		<b>Subtotal</b>	<b>7 357</b>	<b>417 202</b>	<b>56.71</b>
	<b>Subtotal</b>		<b>7 357</b>	<b>417 202</b>	<b>56.71</b>
<b>Conectiv Energy</b>	Other	Permit 212	5 398	279 496	51.78
		<b>Subtotal</b>	<b>5 398</b>	<b>279 496</b>	<b>51.78</b>
	<b>Subtotal</b>		<b>5 398</b>	<b>279 496</b>	<b>51.78</b>
<b>Direct EM Inc.</b>	Other	Permit 200	800	31 372	39.22
		<b>Subtotal</b>	<b>800</b>	<b>31 372</b>	<b>39.22</b>
	<b>Subtotal</b>		<b>800</b>	<b>31 372</b>	<b>39.22</b>
<b>DTE Energy Trad</b>	Other	Permit 206	8 906	402 500	45.19
		<b>Subtotal</b>	<b>8 906</b>	<b>402 500</b>	<b>45.19</b>
	<b>Subtotal</b>		<b>8 906</b>	<b>402 500</b>	<b>45.19</b>
<b>Emera Energy</b>	Other	Permit 216	10 219	632 571	61.90
		Permit 217	26 878	1 465 901	54.54
	<b>Subtotal</b>		<b>37 097</b>	<b>2 098 472</b>	<b>56.57</b>

Footnotes:

1. Revenue figures are for illustrative purposes only and are strictly allocatable by energy source.



## TABLE 5 Source of Production Report by Exporter

Exporter	Fuel Type	Authorization	NOV07		
			Energy (MW.h)	Revenue (CAN\$) <sup>1</sup>	CAN\$/MW.h <sup>1</sup>
	<b>Subtotal</b>		<b>37 097</b>	<b>2 098 472</b>	<b>56.57</b>
<b>ENMAX Energy Ma</b>	Canadian Coal	Permit 278	1 256	72 938	58.07
		<b>Subtotal</b>	<b>1 256</b>	<b>72 938</b>	<b>58.07</b>
	<b>Subtotal</b>		<b>1 256</b>	<b>72 938</b>	<b>58.07</b>
<b>Hydro-Quebec</b>	Hydraulic	Licence 180	88 875	2 685 969	30.22
		Licence 181	14 954	451 938	30.22
		Licence 182	13 563	409 899	30.22
		Licence 183	24 385	736 960	30.22
		Licence 184	15 198	459 312	30.22
		Permit 64	1 049 431	67 999 950	64.80
		Permit 65	18 437	1 103 419	59.85
		<b>Subtotal</b>	<b>1 224 843</b>	<b>73 847 448</b>	<b>60.29</b>
<b>Subtotal</b>		<b>1 224 843</b>	<b>73 847 448</b>	<b>60.29</b>	
<b>Integrays</b>	Other	Permit 250	45 544	2 104 564	46.21
		<b>Subtotal</b>	<b>45 544</b>	<b>2 104 564</b>	<b>46.21</b>
	<b>Subtotal</b>		<b>45 544</b>	<b>2 104 564</b>	<b>46.21</b>
<b>MAG Energy Sol.</b>	Other	Permit 255	37 899	1 753 277	46.26
		<b>Subtotal</b>	<b>37 899</b>	<b>1 753 277</b>	<b>46.26</b>
	<b>Subtotal</b>		<b>37 899</b>	<b>1 753 277</b>	<b>46.26</b>
<b>Manitoba Hydro</b>	Hydraulic	Permit 144	16 993	1 275 356	75.05
		Permit 155	20 858	1 053 448	50.51
		Permit 224	169 299	8 756 799	51.72

Footnotes:

1. Revenue figures are for illustrative purposes only and are strictly allocatable by energy source.



## TABLE 5 Source of Production Report by Exporter

Exporter	Fuel Type	Authorization	NOV07			
			Energy (MW.h)	Revenue (CAN\$) <sup>1</sup>	CAN\$/MW.h <sup>1</sup>	
Manitoba Hydro	Hydraulic	Permit 269	683 019	26 664 137	39.04	
		<b>Subtotal</b>	<b>890 169</b>	<b>37 749 741</b>	<b>42.41</b>	
	Imported Coal	Permit 144	184	13 784	75.05	
		Permit 155	225	11 386	50.51	
		Permit 224	1 830	94 644	51.72	
		Permit 269	7 382	288 189	39.04	
		<b>Subtotal</b>	<b>9 621</b>	<b>408 003</b>	<b>42.41</b>	
	Natural Gas	Permit 144	27	2 051	75.05	
		Permit 155	34	1 694	50.50	
		Permit 224	272	14 085	51.72	
		Permit 269	1 099	42 890	39.03	
		<b>Subtotal</b>	<b>1 432</b>	<b>60 721</b>	<b>42.40</b>	
	Other	Permit 144	2	171	75.05	
		Permit 155	3	141	50.51	
		Permit 224	23	1 172	51.72	
		Permit 269	91	3 569	39.07	
		<b>Subtotal</b>	<b>119</b>	<b>5 053</b>	<b>42.43</b>	
		<b>Subtotal</b>		<b>901 341</b>	<b>38 223 518</b>	<b>42.41</b>
	Merrill-Lynch	Other	Permit 227	-3 716	180 034	-48.45
<b>Subtotal</b>			<b>-3 716</b>	<b>180 034</b>	<b>-48.45</b>	
<b>Subtotal</b>			<b>-3 716</b>	<b>180 034</b>	<b>-48.45</b>	

Footnotes:

1. Revenue figures are for illustrative purposes only and are strictly allocatable by energy source.



## TABLE 5 Source of Production Report by Exporter

Exporter	Fuel Type	Authorization	NOV07			
			Energy (MW.h)	Revenue (CAN\$) <sup>1</sup>	CAN\$/MW.h <sup>1</sup>	
NB Power Gen.	Canadian Coal	Permit 295	7 866	512 297	65.13	
		<b>Subtotal</b>	<b>7 866</b>	<b>512 297</b>	<b>65.13</b>	
	Hydraulic	Permit 295	787	51 255	65.13	
		<b>Subtotal</b>	<b>787</b>	<b>51 255</b>	<b>65.13</b>	
	Imported Coal	Permit 295	35 245	2 295 544	65.13	
		<b>Subtotal</b>	<b>35 245</b>	<b>2 295 544</b>	<b>65.13</b>	
	Imported Oil	Permit 295	24 374	1 587 511	65.13	
		<b>Subtotal</b>	<b>24 374</b>	<b>1 587 511</b>	<b>65.13</b>	
	Other	Permit 295	17 325	1 128 376	65.13	
		<b>Subtotal</b>	<b>17 325</b>	<b>1 128 376</b>	<b>65.13</b>	
	<b>Subtotal</b>		<b>85 596</b>	<b>5 574 983</b>	<b>65.13</b>	
	NRG Power Mktg	Other	Permit 171	1 767	57 679	32.64
			<b>Subtotal</b>	<b>1 767</b>	<b>57 679</b>	<b>32.64</b>
		<b>Subtotal</b>		<b>1 767</b>	<b>57 679</b>	<b>32.64</b>
	Ont Power Gen	Other	Permit 24	16	761	46.81
<b>Subtotal</b>			<b>16</b>	<b>761</b>	<b>46.81</b>	
<b>Subtotal</b>			<b>16</b>	<b>761</b>	<b>46.81</b>	
OPG/OETIC	Other	Permit 284	160 529	7 622 883	47.49	
		<b>Subtotal</b>	<b>160 529</b>	<b>7 622 883</b>	<b>47.49</b>	
	<b>Subtotal</b>		<b>160 529</b>	<b>7 622 883</b>	<b>47.49</b>	

Footnotes:

1. Revenue figures are for illustrative purposes only and are strictly allocatable by energy source.



## TABLE 5 Source of Production Report by Exporter

Exporter	Fuel Type	Authorization	NOV07		
			Energy (MW.h)	Revenue (CAN\$) <sup>1</sup>	CAN\$/MW.h <sup>1</sup>
<b>Powerex Corp.</b>	Hydraulic	Permit 118	21 751	1 309 598	60.21
		Permit 119	35 768	2 464 150	68.89
		<b>Subtotal</b>	<b>57 519</b>	<b>3 773 748</b>	<b>65.61</b>
	Other	Permit 116	65 015	3 376 437	51.93
		Permit 118	577 004	34 740 623	60.21
		<b>Subtotal</b>	<b>642 019</b>	<b>38 117 060</b>	<b>59.37</b>
	<b>Subtotal</b>		<b>699 538</b>	<b>41 890 808</b>	<b>59.88</b>
<b>Rainbow</b>	Other	Permit 263	6 251	270 376	43.25
		<b>Subtotal</b>	<b>6 251</b>	<b>270 376</b>	<b>43.25</b>
	<b>Subtotal</b>		<b>6 251</b>	<b>270 376</b>	<b>43.25</b>
<b>Saracen Merchan</b>	Other	Permit 276	8 519	466 372	54.74
		<b>Subtotal</b>	<b>8 519</b>	<b>466 372</b>	<b>54.74</b>
	<b>Subtotal</b>		<b>8 519</b>	<b>466 372</b>	<b>54.74</b>
<b>SIG-H LLC</b>	Other	Permit 291	13 640	829 455	60.81
		<b>Subtotal</b>	<b>13 640</b>	<b>829 455</b>	<b>60.81</b>
	<b>Subtotal</b>		<b>13 640</b>	<b>829 455</b>	<b>60.81</b>
<b>Silverhill</b>	Other	Permit 279	35 856	2 004 754	55.91
		<b>Subtotal</b>	<b>35 856</b>	<b>2 004 754</b>	<b>55.91</b>
	<b>Subtotal</b>		<b>35 856</b>	<b>2 004 754</b>	<b>55.91</b>

Footnotes:

1. Revenue figures are for illustrative purposes only and are strictly allocatable by energy source.



## TABLE 5 Source of Production Report by Exporter

Exporter	Fuel Type	Authorization	NOV07		
			Energy (MW.h)	Revenue (CAN\$) <sup>1</sup>	CAN\$/MW.h <sup>1</sup>
Teck Cominco	Hydraulic	Permit 244	76 927	4 508 078	58.60
		<b>Subtotal</b>	<b>76 927</b>	<b>4 508 078</b>	<b>58.60</b>
	<b>Subtotal</b>		<b>76 927</b>	<b>4 508 078</b>	<b>58.60</b>
TransCan ULC	Other	Permit 271	5 299	273 685	51.65
		<b>Subtotal</b>	<b>5 299</b>	<b>273 685</b>	<b>51.65</b>
	<b>Subtotal</b>		<b>5 299</b>	<b>273 685</b>	<b>51.65</b>
<b>Total All Exporters</b>			<b>3 607 443</b>	<b>193 155 399</b>	<b>53.54</b>

Footnotes:

1. Revenue figures are for illustrative purposes only and are strictly allocatable by energy source.