

April 2015

FIGURE A1-49

**REROUTE AT
SKP 1094.3 - 1096.2**

**ENBRIDGE PIPELINES INC.
LINE 3 REPLACEMENT
PROGRAM**

10427

- Station Kilometre Post
- Reroute Station Kilometre Post
- Line 3 Replacement Pipeline Route (Route Filed November 5, 2014)
- Line 3 Replacement Pipeline Reroute
- Construction Right-of-Way
- Extra Temporary Workspace
- Access Road/Shoofly
- Enbridge Property Extension
- Existing Enbridge Station/Terminal
- Highway
- Road
- Access/Resource Road
- Railway
- City/Town/Village

SCALE: 1:10,000

100 0 100 m

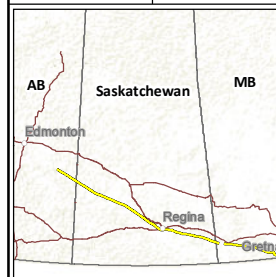
(All Locations Approximate)

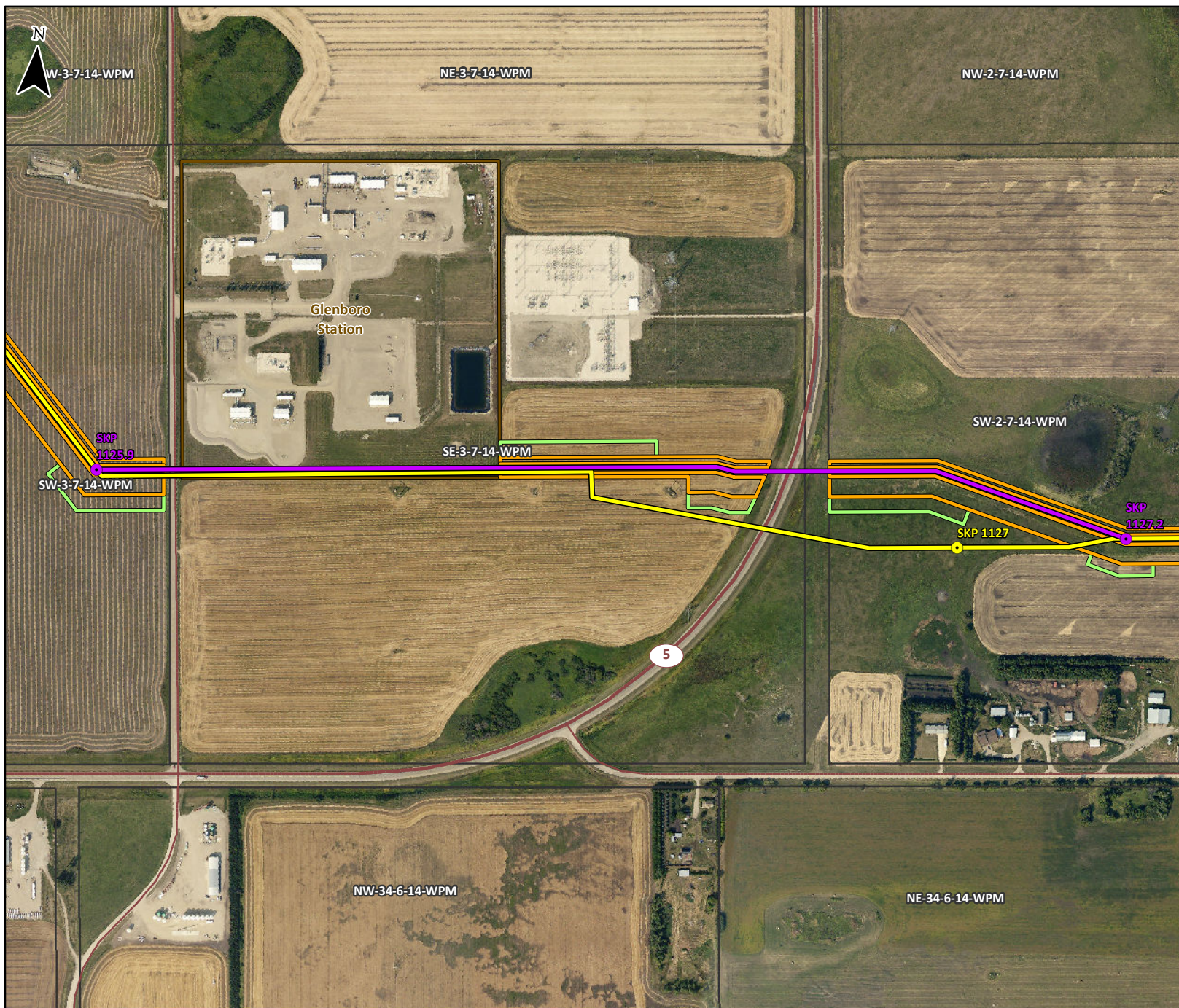


Enbridge Lambert Conformal Conic
Satellite Imagery: Enbridge Pipelines Inc. 2013; licensed by
Pictometry 2012; Roads: JHS Inc. 2015; Railway: NRCan 2012.

Although there is no reason to believe that there are any errors associated with the data used to generate this product or in the product itself, users of these data are advised that errors in the data may be present.

Mapped By: WL Checked By: CN





April 2015

FIGURE A1-50

**REROUTE AT
SKP 1125.9 - 1127.2**

**ENBRIDGE PIPELINES INC.
LINE 3 REPLACEMENT
PROGRAM**

10427

- Station Kilometre Post
- Reroute Station Kilometre Post
- Line 3 Replacement Pipeline Route (Route Filed November 5, 2014)
- Line 3 Replacement Pipeline Reroute
- Construction Right-of-Way
- Extra Temporary Workspace
- Access Road/Shoofly
- Enbridge Property Extension
- Existing Enbridge Station/Terminal
- Highway
- Road
- Access/Resource Road
- Railway
- City/Town/Village

SCALE: 1:7,000

50 0 50 m

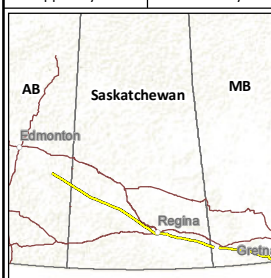
(All Locations Approximate)

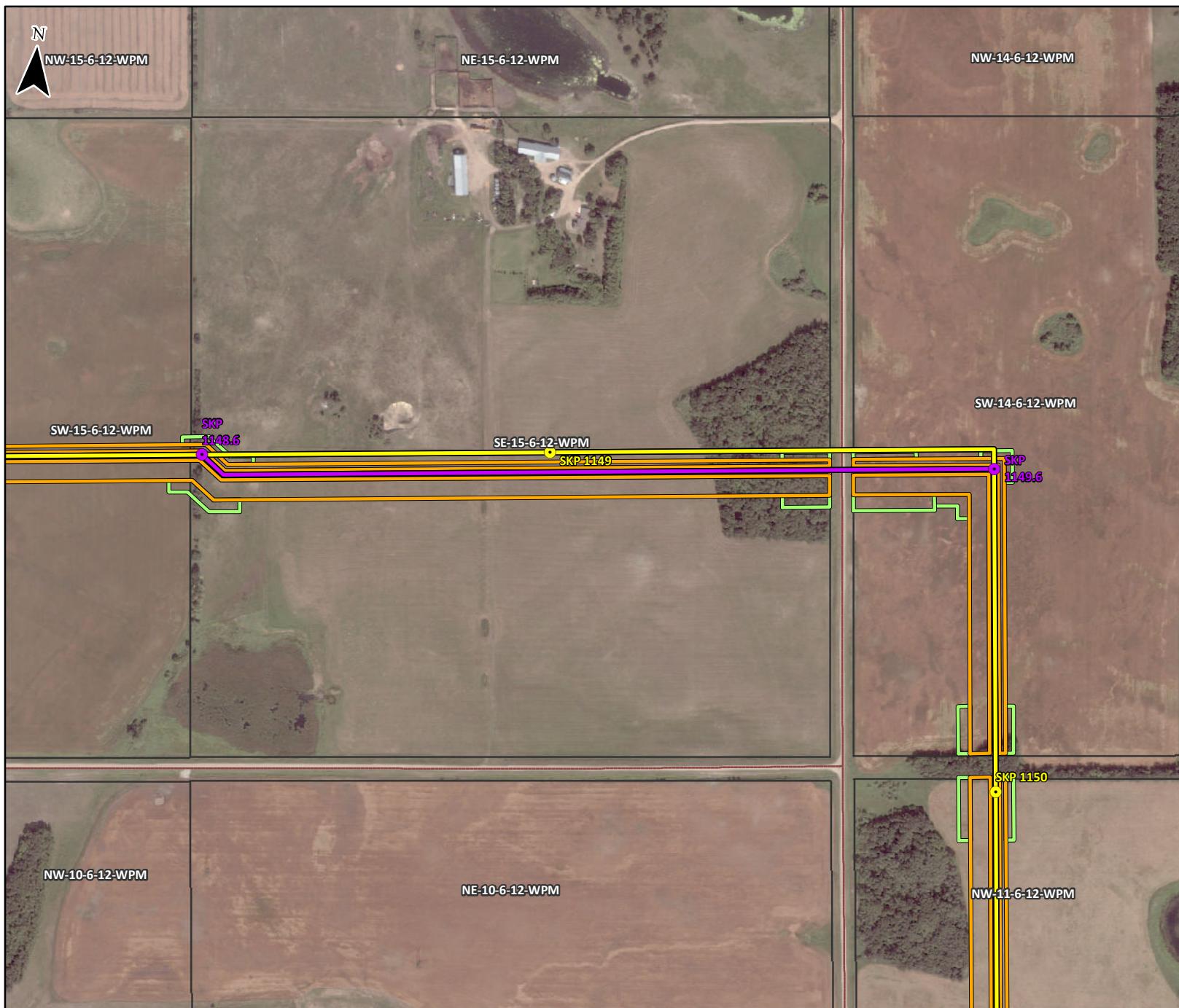


Enbridge Lambert Conformal Conic
Satellite Imagery: Enbridge Pipelines Inc. 2013; licensed by
Pictometry 2012; Roads: SHS Inc. 2015; Railway: NRCan 2012.

Although there is no reason to believe that there are any errors associated with the data used to generate this product or in the product itself, users of these data are advised that errors in the data may be present.

Mapped By: WL Checked By: CN





April 2015

FIGURE A1-51

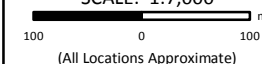
**REROUTE AT
SKP 1148.6 - 1149.6**

**ENBRIDGE PIPELINES INC.
LINE 3 REPLACEMENT
PROGRAM**

10427

- Station Kilometre Post
- Reroute Station Kilometre Post
- Line 3 Replacement Pipeline Route (Route Filed November 5, 2014)
- Line 3 Replacement Pipeline Reroute
- Construction Right-of-Way
- Extra Temporary Workspace
- Access Road/Shoofly
- Enbridge Property Extension
- Existing Enbridge Station/Terminal
- X 892 Highway
- Road
- Access/Resource Road
- Railway
- City/Town/Village

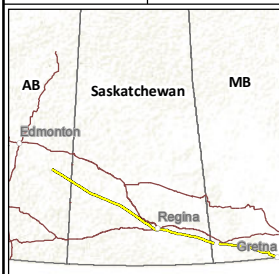
SCALE: 1:7,000

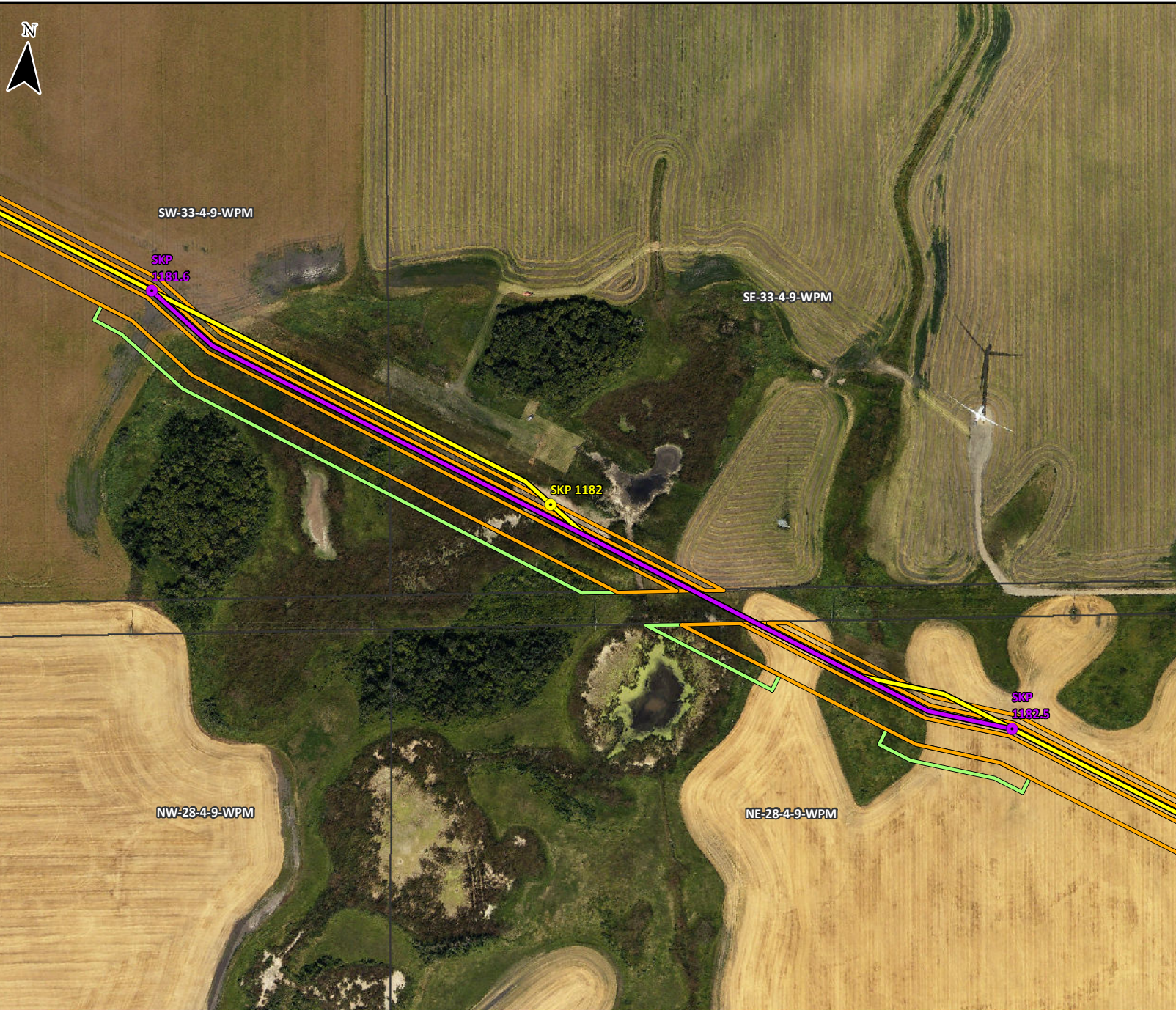


Enbridge Lambert Conformal Conic
Satellite Imagery: Enbridge Pipelines Inc. 2013; licensed by
Pictometry 2012; Roads: SHS Inc. 2015; Railway: NRCan 2012.

Although there is no reason to believe that there are any errors associated with the data used to generate this product, or in the product itself, users of these data are advised that errors in the data may be present.

Mapped By: WL Checked By: CN





April 2015

FIGURE A1-53

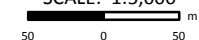
**REROUTE AT
SKP 1181.6 - 1182.5**

**ENBRIDGE PIPELINES INC.
LINE 3 REPLACEMENT
PROGRAM**

10427

- Station Kilometre Post
- Reroute Station Kilometre Post
- Line 3 Replacement Pipeline Route (Route Filed November 5, 2014)
- Line 3 Replacement Pipeline Reroute
- Construction Right-of-Way
- Extra Temporary Workspace
- Access Road/Shoofly
- Enbridge Property Extension
- Existing Enbridge Station/Terminal
- Highway
- Road
- Access/Resource Road
- Railway
- City/Town/Village

SCALE: 1:5,000



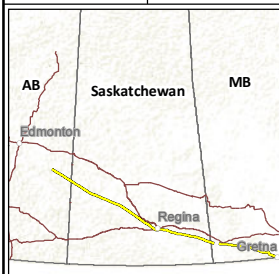
(All Locations Approximate)



Enbridge Lambert Conformal Conic
Satellite Imagery: Enbridge Pipelines Inc. 2013; licensed by
Pictometry 2012; Roads: JHS Inc. 2015; Railway: NRCan 2012.

Although there is no reason to believe that there are any errors associated with the data used to generate this product or in the product itself, users of these data are advised that errors in the data may be present.

Mapped By: WL Checked By: CN



April 2015

FIGURE A1-54

**REROUTE AT
SKP 1218.8 - 1222.3**

**ENBRIDGE PIPELINES INC.
LINE 3 REPLACEMENT
PROGRAM**

10427

- Station Kilometre Post
- Reroute Station Kilometre Post
- Line 3 Replacement Pipeline Route (Route Filed November 5, 2014)
- Line 3 Replacement Pipeline Reroute
- Construction Right-of-Way
- Extra Temporary Workspace
- Access Road/Shoofly
- Enbridge Property Extension
- Existing Enbridge Station/Terminal
- Highway
- Road
- Access/Resource Road
- Railway
- City/Town/Village

SCALE: 1:21,000



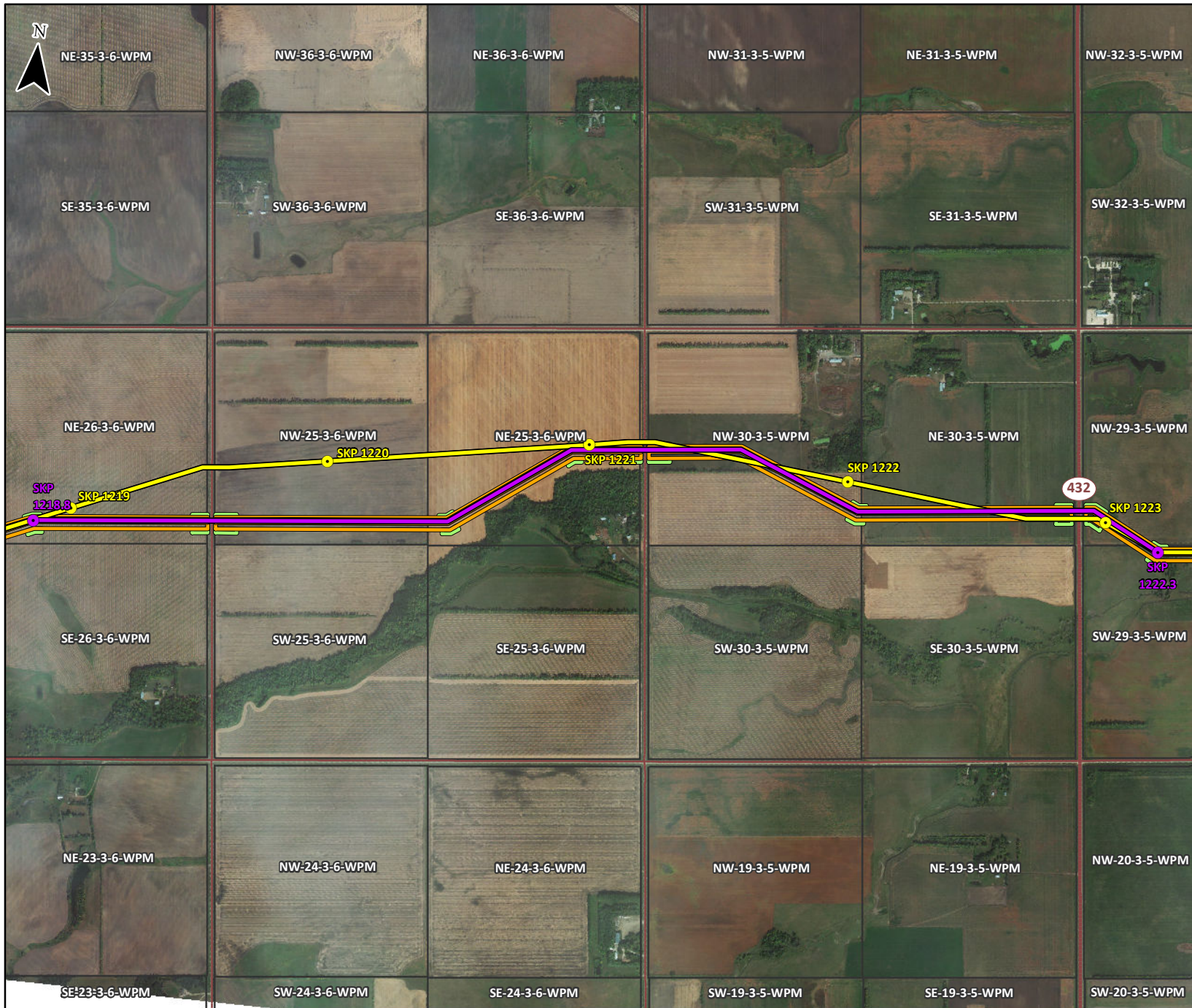
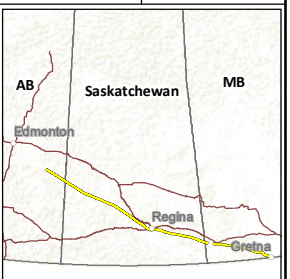
(All Locations Approximate)

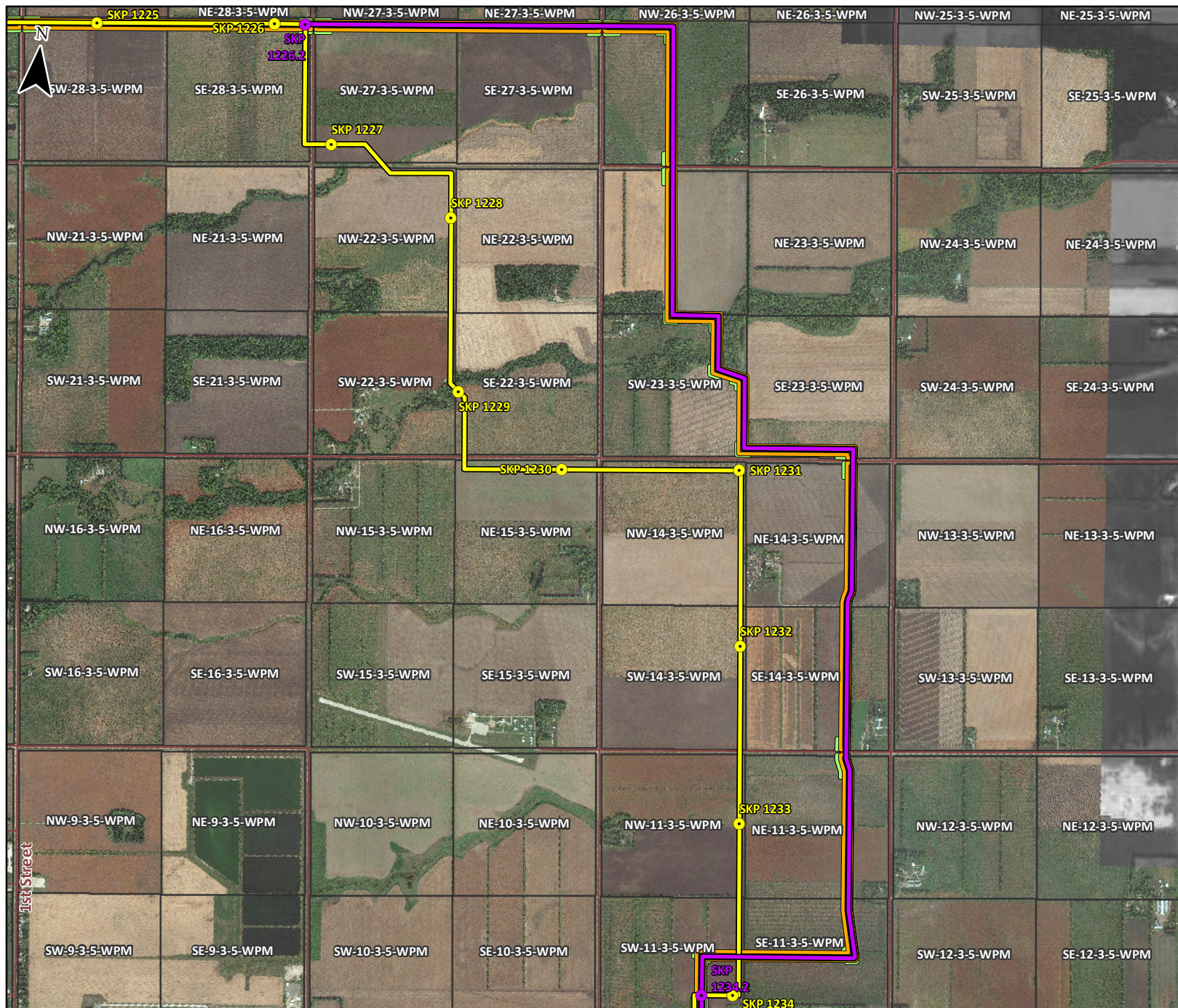
tera A CH2M HILL Company

Enbridge Lambert Conformal Conic
Satellite Imagery: Enbridge Pipelines Inc. 2013; Licensed by
Pictometry 2012; Roads: IHS Inc. 2015; Railway: NRCAN 2012.

Although there is no reason to believe that there are any errors associated with the data used to generate this product or in the product itself, users of these data are advised that errors in the data may be present.

Mapped By: WL Checked By: CN





April 2015

FIGURE A1-55

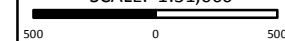
**REROUTE AT
SKP 1226.2 - 1234.2**

**ENBRIDGE PIPELINES INC.
LINE 3 REPLACEMENT
PROGRAM**

10427

- Station Kilometre Post
- Reroute Station Kilometre Post
- Line 3 Replacement Pipeline Route (Route Filed November 5, 2014)
- Line 3 Replacement Pipeline Reroute
- Construction Right-of-Way
- Extra Temporary Workspace
- Access Road/Shoofly
- Enbridge Property Extension
- Existing Enbridge Station/Terminal
- X 892 Highway
- Road
- Access/Resource Road
- Railway
- City/Town/Village

SCALE: 1:31,000



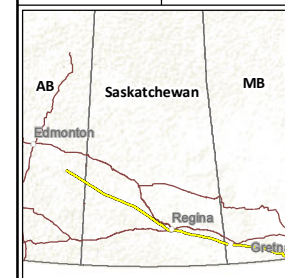
(All Locations Approximate)

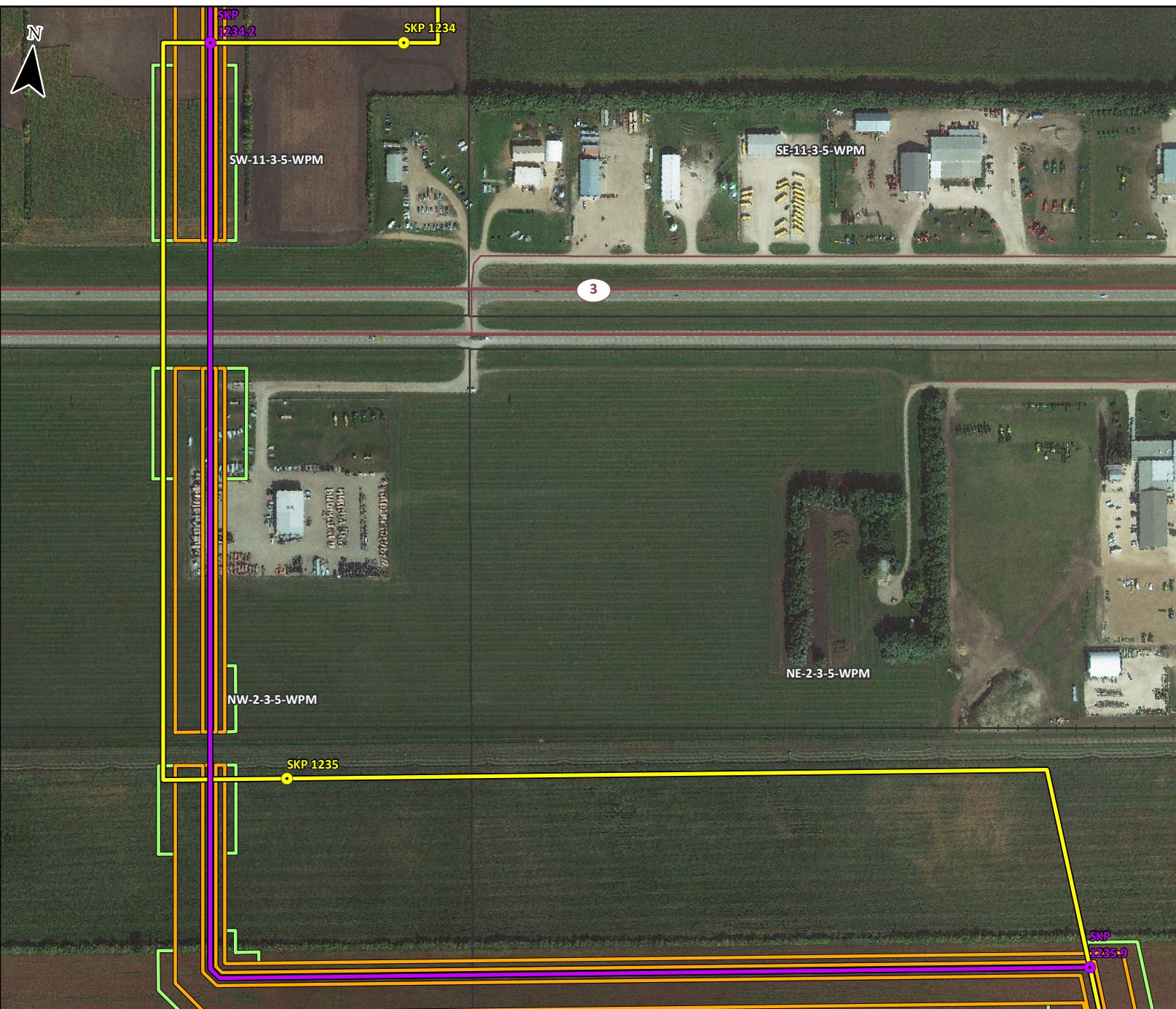


Enbridge Lambert Conformal Conic
Satellite Imagery: Enbridge Pipelines Inc. 2013; licensed by
Pictometry 2012; Roads: SHS Inc. 2015; Railway: NRCAN 2012.

Although there is no reason to believe that there are any errors associated with the data used to generate this product or in the product itself, users of these data are advised that errors in the data may be present.

Mapped By: WL Checked By: CN





April 2015

FIGURE A1-56

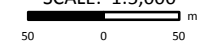
**REROUTE AT
SKP 1234.2 - 1235.9**

**ENBRIDGE PIPELINES INC.
LINE 3 REPLACEMENT
PROGRAM**

10427

- Station Kilometre Post
- Reroute Station Kilometre Post
- Line 3 Replacement Pipeline Route (Route Filed November 5, 2014)
- Line 3 Replacement Pipeline Reroute
- Construction Right-of-Way
- Extra Temporary Workspace
- Access Road/Shoofly
- Enbridge Property Extension
- Existing Enbridge Station/Terminal
- Highway
- Road
- Access/Resource Road
- Railway
- City/Town/Village

SCALE: 1:5,000



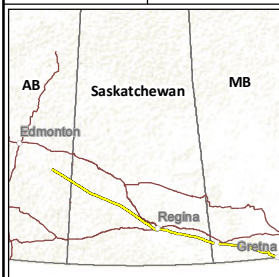
(All Locations Approximate)

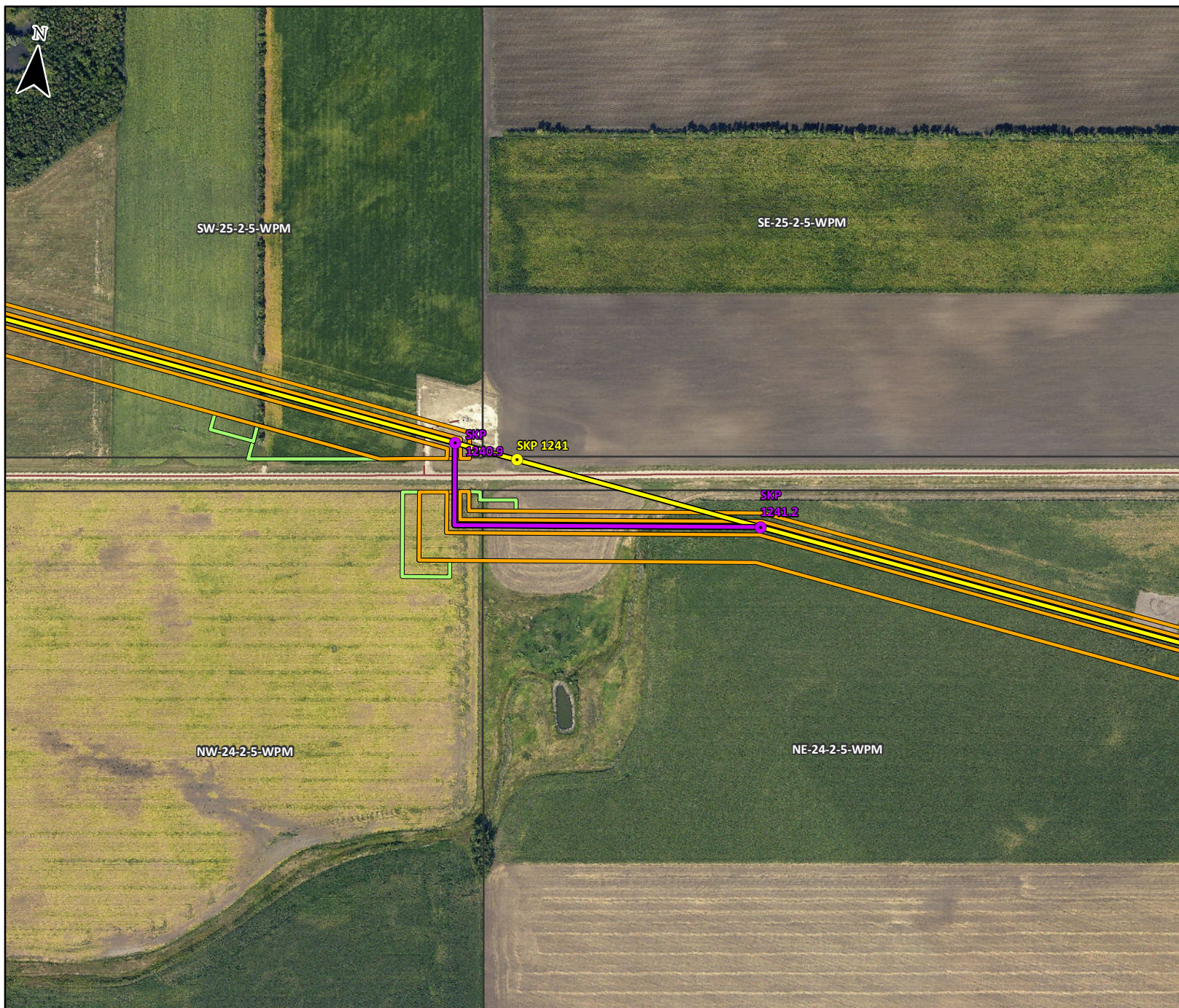


Enbridge Lambert Conformal Conic
Satellite Imagery: Enbridge Pipelines Inc. 2013; licensed by
Pictometry 2012; Roads: JHS Inc. 2015; Railway: NRCAN 2012.

Although there is no reason to believe that there are any errors associated with the data used to generate this product or in the product itself, users of these data are advised that errors in the data may be present.

Mapped By: WL Checked By: CN





April 2015

FIGURE A1-57

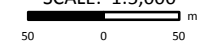
**REROUTE AT
SKP 1240.9 - 1241.2**

**ENBRIDGE PIPELINES INC.
LINE 3 REPLACEMENT
PROGRAM**

10427

- Station Kilometre Post
- Reroute Station Kilometre Post
- Line 3 Replacement Pipeline Route (Route Filed November 5, 2014)
- Line 3 Replacement Pipeline Reroute
- Construction Right-of-Way
- Extra Temporary Workspace
- Access Road/Shoofly
- Enbridge Property Extension
- Existing Enbridge Station/Terminal
- X 892 Highway
- Road
- Access/Resource Road
- Railway
- City/Town/Village

SCALE: 1:5,000



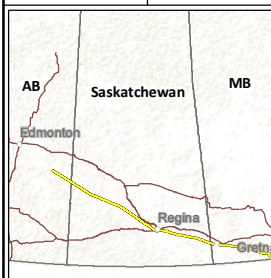
(All Locations Approximate)



Enbridge Lambert Conformal Conic
Satellite Imagery: Enbridge Pipelines Inc. 2013; licensed by
Pictometry 2012; Roads: SHS Inc. 2015; Railway: NRCan 2012.

Although there is no reason to believe that there are any errors associated with the data used to generate this product or in the product itself, users of these data are advised that errors in the data may be present.

Mapped By: WL Checked By: CN



April 2015

FIGURE A1-58

**REROUTE AT
SKP 1241.7 - 1250.7**

**ENBRIDGE PIPELINES INC.
LINE 3 REPLACEMENT
PROGRAM**

10427

- Station Kilometre Post
- Reroute Station Kilometre Post
- Line 3 Replacement Pipeline Route (Route Filed November 5, 2014)
- Line 3 Replacement Pipeline Reroute
- Construction Right-of-Way
- Extra Temporary Workspace
- Access Road/Shoofly
- Enbridge Property Extension
- Existing Enbridge Station/Terminal
- Highway
- Road
- Access/Resource Road
- Railway
- City/Town/Village

SCALE: 1:38,000

500 0 500 m

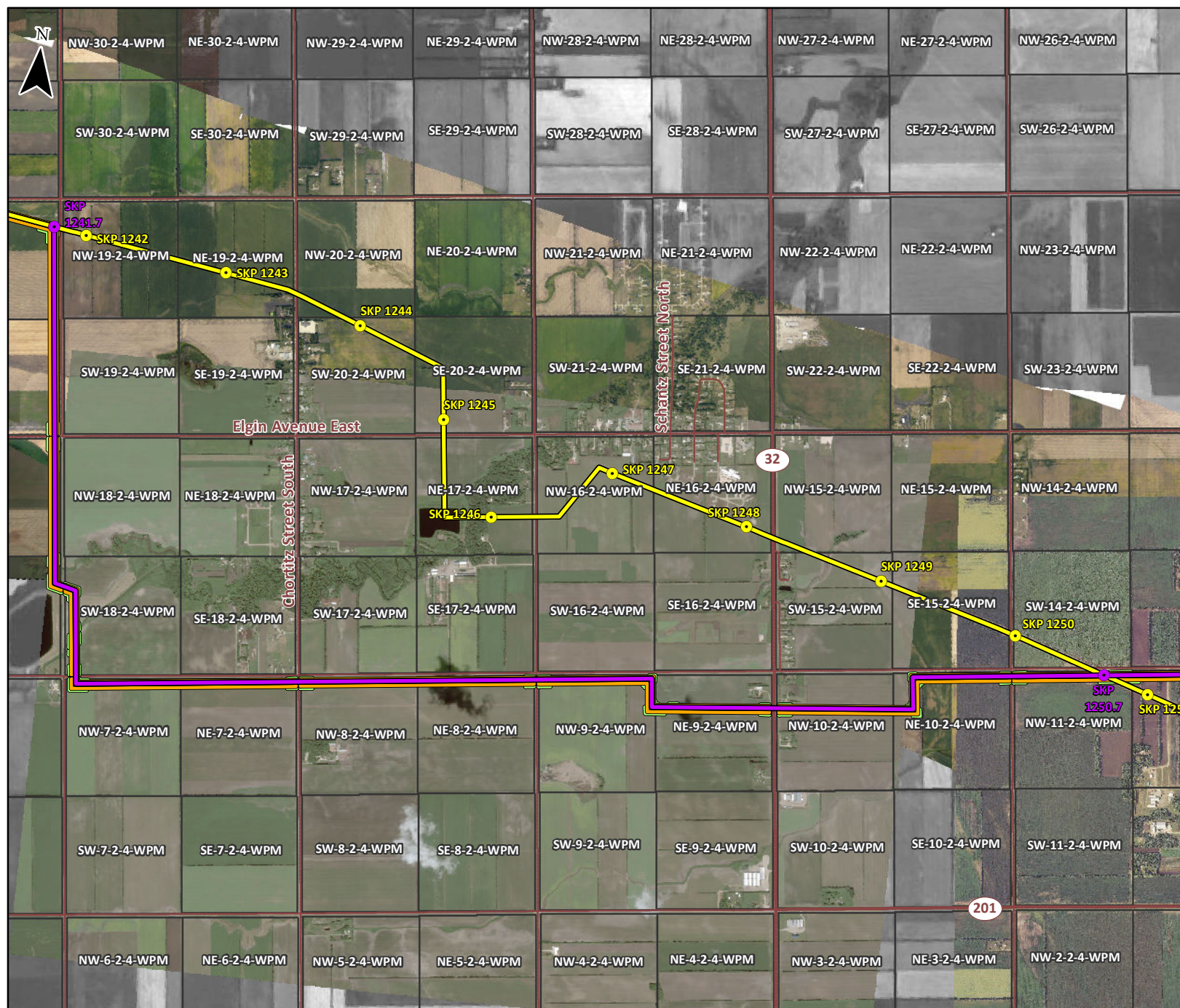
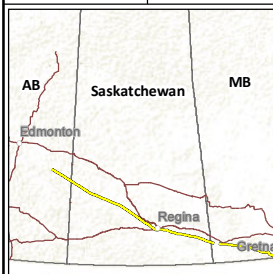
(All Locations Approximate)

A CH2M HILL Company

Enbridge Lambert Conformal Conic
Satellite Imagery: Enbridge Pipelines Inc. 2013; licensed by
Pictometry 2012; Roads: JHS Inc. 2015; Railway: NRCAN 2012.

Although there is no reason to believe that there are any errors associated with the data used to generate this product or in the product itself, users of these data are advised that errors in the data may be present.

Mapped By: WL Checked By: CN



April 2015

FIGURE A1-59

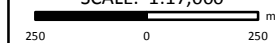
**REROUTE AT
SKP 1250.7 - 1254.3**

**ENBRIDGE PIPELINES INC.
LINE 3 REPLACEMENT
PROGRAM**

10427

- Station Kilometre Post
- Reroute Station Kilometre Post
- Line 3 Replacement Pipeline Route (Route Filed November 5, 2014)
- Line 3 Replacement Pipeline Reroute
- Construction Right-of-Way
- Extra Temporary Workspace
- Access Road/Shoofly
- Enbridge Property Extension
- Existing Enbridge Station/Terminal
- Highway
- Road
- Access/Resource Road
- Railway
- City/Town/Village

SCALE: 1:17,000



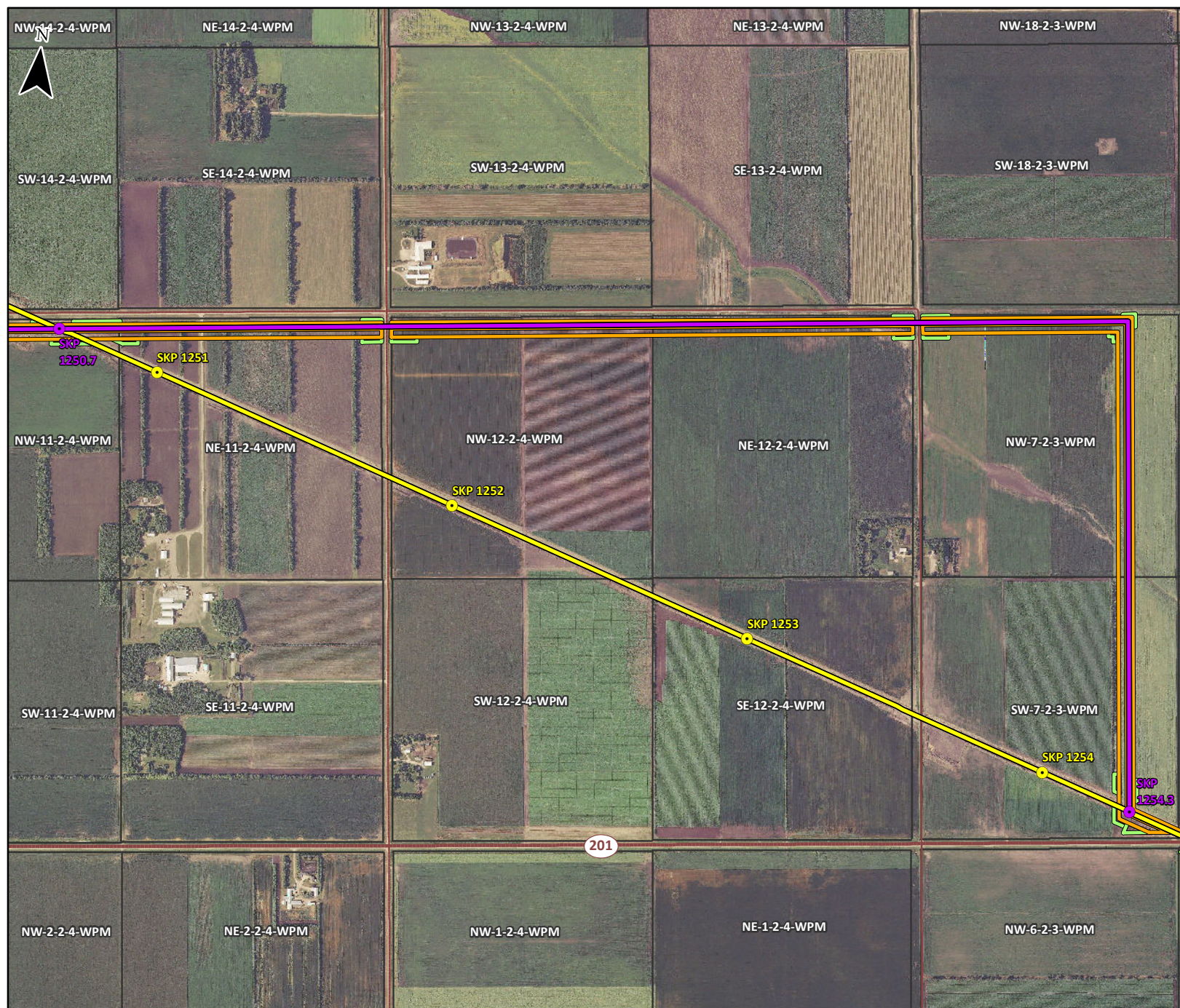
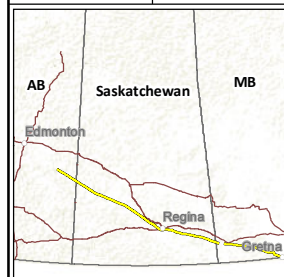
(All Locations Approximate)

tera A CH2M HILL Company

Enbridge Lambert Conformal Conic
Satellite Imagery: Enbridge Pipelines Inc. 2013; licensed by
Pictometry 2012; Roads: SHS Inc. 2015; Railway: NRCan 2012.

Although there is no reason to believe that there are any errors associated with the data used to generate this product or in the product itself, users of these data are advised that errors in the data may be present.

Mapped By: WL Checked By: CN



April 2015

FIGURE A1-60

**REROUTE AT
SKP 1261.4 - 1266.9**

**ENBRIDGE PIPELINES INC.
LINE 3 REPLACEMENT
PROGRAM**

10427

- Station Kilometre Post
- Reroute Station Kilometre Post
- Line 3 Replacement Pipeline Route (Route Filed November 5, 2014)
- Line 3 Replacement Pipeline Reroute
- Construction Right-of-Way
- Extra Temporary Workspace
- Access Road/Shoofly
- Enbridge Property Extension
- Existing Enbridge Station/Terminal
- Highway
- Road
- Access/Resource Road
- Railway
- City/Town/Village

SCALE: 1:25,000

250 0 250 m
(All Locations Approximate)

A CH2M HILL Company

Enbridge Lambert Conformal Conic
Satellite Imagery: Enbridge Pipelines Inc. 2013; licensed by
Pictometry 2012; Roads: JHS Inc. 2015; Railway: NRCAN 2012.

Although there is no reason to believe that there are any errors associated with the data used to generate this product or in the product itself, users of these data are advised that errors in the data may be present.

Mapped By: WL Checked By: CN

